

ANDREA & LEO

c o u r e

2024 Collection

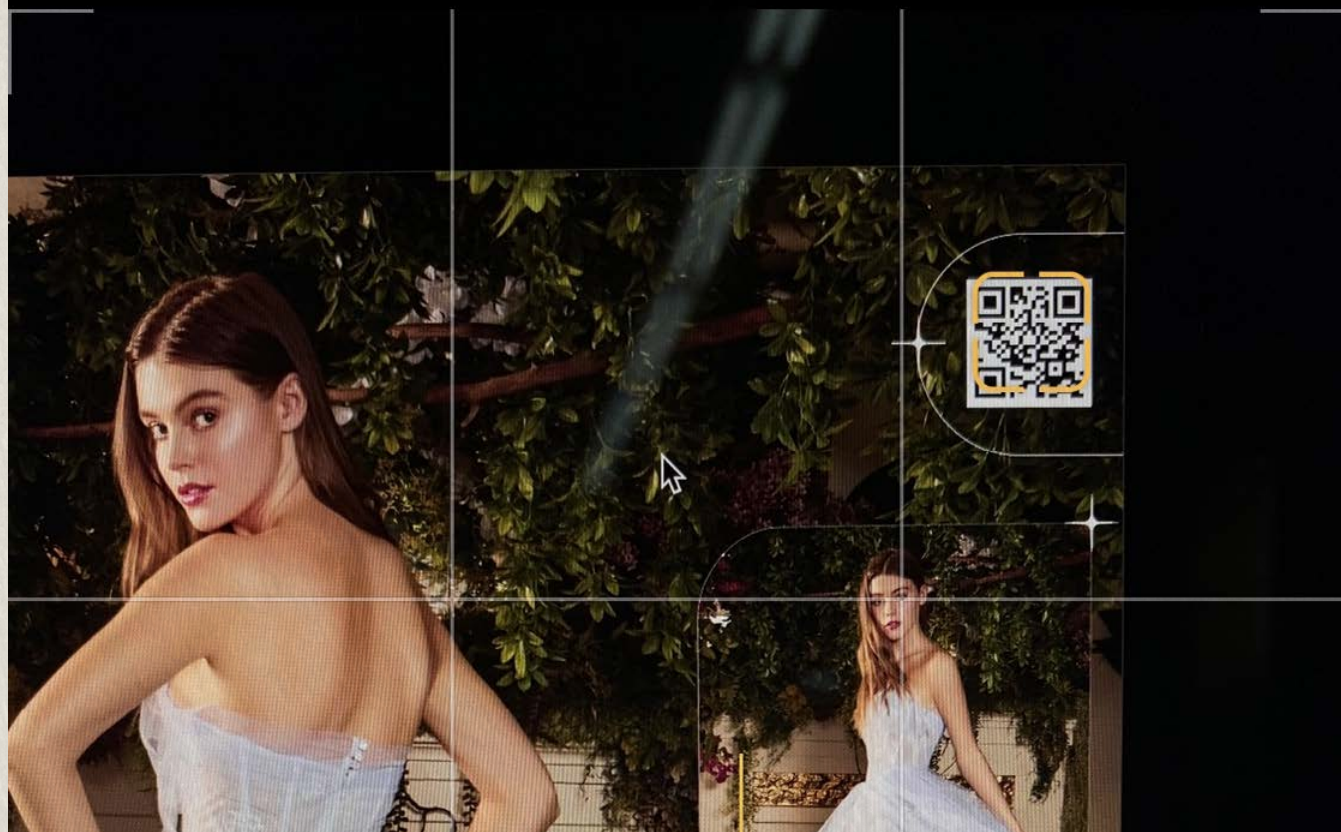
ANDREA & LEO COUTURE | PROM & EVENING

Try our QR Video Catalog



QR CODE DETECTED

Open "vimeo.com" link



To see videos & download:

1. Open camera app on the smart phone.
2. Focus on the QR code.
3. Tap on the Vimeo link.
4. Press play and enlarge if desired.
5. Back to Camera app to scan another QR code.





ANDREA & LEO

Andrea & Leo 2024 s/s collection is inspired by an unexpected adventure into a butterfly garden. The imagery that ignited the collection came from a stroll in the backyard garden at the perfect moment of the sun kissing life into the greenery. Glistening in sunlight, the leaves lit up and became a jewel of their own nature. Butterflies, free from all constraints, danced through the weave of the delicate branches that arched. It was the imagery of joy that I wish upon everyone that wears Andrea & Leo. In everyday mundane, there is magic to be found at the most unexpected moments. The willingness to revel opens our eyes to new classics & inspirations unseen. The collection embeds this intention into the gowns with a bright, joyful color palette and signature handcrafted embellishments inspired by the nature.

AL
ANDREA & LEO
couture

ANDREA & LEO
PROM



A1247

HIDDEN ROMANCE
BALL GOWN

SIZE: 2 ~ 18

- BLACK
- BLUE
- PINK



A1327

WHISPERING NYMPH
LACE GOWN

SIZE: 2 ~ 16

◆ BLUSH



A1236

SUNSET FAE GOWN

SIZE: 2 ~ 14

- ◆ DUSTY LAVENDER
- ◆ ROSEWOOD
- ◆ SAGE



A1305

LUMINOUS LACE GOWN

SIZE: 2 ~ 18

- ◆ LT BLUE
- ◆ NAVY
- ◆ PINK



A1285

SERENADE WITH
FLOWERS PRINT GOWN

SIZE: 2 ~ 14

◆ BLUE



A1261

MISTY BEAD GOWN

SIZE: 2 ~ 18

DUSTY SAGE
FRENCH CAFE



A0767

STRAPLESS FAUX CORSET W/
RUFFLED OMBRE BALL GOWN

SIZE: 2 ~ 14

◆ BLUSH
◆ BLUE



A1232

PETAL PRELUDE
GLITTER GOWN

SIZE: 2 ~ 14

◆ PARIS BLUE
◆ SAGE



A1338

STARGAZE
RIBBON GOWN

SIZE: 2 ~ 16

◆ MIDNIGHT BLUE

◆ ROSE GOLD



A1334

PRIMROSE BEAUTY
PRINT GOWN

SIZE: 2 ~ 18

- ◆ BLUE
- ◆ BLUSH



A1108

OPAL GARDEN CORSET GOWN
W DETACHABLE PUFF SLEEVES

SIZE: 2 ~ 16

- ◆ LAVENDER
- ◆ PARIS BLUE
- ◆ TEA ROSE



A1286

SECRET WHISPER
PRINT GOWN

SIZE: 2 ~ 16

◆ LAVENDER



A1246

GOLDEN HOUR
BUTTERFLY GOWN

SIZE: 2 ~ 16

DUSTY BLUE ◆



A1258

EDEN EUPHORIA
STRAPLESS GOWN

SIZE: 2 ~ 16

- ◆ DUSTY BLUE
- ◆ DUSTY LAVENDER
- ◆ DUSTY SAGE



A1322

WHISPERING WILLOW
GOWN

SIZE: 2 - 16

◆ DUSTY ROSE



A1255

PIXIE LACE GOWN

SIZE: 2 ~ 16

- ◆ CHAMPAGNE
- ◆ LT BLUE
- ◆ PINK
- ◆ RED



A1332

ONCE UPON A TIME
PRINT GOWN

SIZE: 2 ~ 18

◆ BLUE



A1133

ROSETTE PRINTED
ORGANZA GOWN

SIZE: 2 ~ 16

◆ MULTI



A1294

SKY WHISPER TULLE GOWN

SIZE: 2 ~ 14

PARIS BLUE ◆



A1267

SHEER BLUSH
BUSTIER GOWN

SIZE: 2 ~ 14

◆ ROSE



A1330

GARDEN SOIREE GOWN

SIZE: 2 ~ 18

◆ BLUSH



A1089

PENELOPE BLOSSOM
GOWN WITH OVERSKIRT

SIZE: 2 ~ 16

- ◆ BLUSH-MAUVE
- ◆ PARIS BLUE
- ◆ SAGE



A1237

FAIRYTALE GARDEN
GOWN

SIZE: 2 ~ 16

- ◆ LAVENDER
- ◆ LEAF GREEN
- ◆ PARIS BLUE



A1238

CASCADE
CONCERTO GOWN

SIZE: 2 ~ 12

◆ AZALEA PINK
◆ MARIGOLD







A1239

FANTASIA TIERED GOWN

SIZE: 2 ~ 12

PEONY PINK 
LIGHT YELLOW 



A1240

GARDEN PARTY GOWN

SIZE: 2 ~ 14

- BLACK
- FUCHSIA
- LIGHT YELLOW



A1150

RHINESTONE CORSET
RUFFLE GOWN

SIZE: 2 ~ 14

- ◆ BLUE
- ◆ MAUVE
- ◆ YELLOW
- ◆ BLACK



A1134

MAGNOLIA CORSET
PRINTED GOWN

SIZE: 2 ~ 14

◆ CHAMPAGNE



A1142

OPAL GARDEN STRAP
A-LINE GOWN

SIZE: 2 ~ 14

- ◆ PASTEL GREEN
- ◆ LAVENDER
- ◆ DUSTY ROSE
- ◆ YELLOW
- ◆ BLUE



A1053

LEILA ONE-SHOULDER
LACE BALLERINA GOWN

SIZE: 2 ~ 16

- ◆ BLUE
- ◆ BLUSH
- ◆ LILAC
- ◆ BLACK
- ◆ SAGE
- ◆ RED



A1128

POSY HALTER TULLE GOWN

SIZE: 2 ~ 16

SMOKY BLUE
BLUSH-MAUVE



A1117

HYDRANGIA MERMAID
CORSET GOWN W/
DETACHABLE SLEEVES

SIZE: 2 ~ 16

EMERALD
MAUVE
LAVENDER
DUSTY BLUE



A1252

AFTERNOON FLOWER
GOWN

SIZE: 2 ~ 16

◆ ROYAL
◆ SEA MIST





A1336

MINUET RUFFLE GOWN

SIZE: 2 ~ 18

- BLACK
- BLUE
- CREAM



A1341

FAE CHIFFON GOWN

SIZE: 2 ~ 16

- BLACK
- BLUE
- BLUSH
- RED
- ROSEWOOD





A1341

FAE CHIFFON GOWN

SIZE: 2 ~ 16

BLACK

BLUE

BLUSH

RED

ROSEWOOD



A1248

HEIRLOOM LACE GOWN

SIZE: 2 ~ 18

◆ BLUE
◆ SAGE





A1303

MELUSINE MIST GOWN

SIZE: 2 ~ 16

- BLACK
- HAZE BLUE
- LAVENDER
- SMOKY BLUE



A1259

EDEN EUPHORIA
ASYMMETRICAL GOWN

SIZE: 2 ~ 16

◆ SAGE



A1254

NIGHTFALL LACE
GOWN

SIZE: 2 ~ 14

BLACK ◆



A1331

POINT D'ESPRIT
RUFFLE GOWN

SIZE: 2 ~ 16

◆ BLACK

◆ LT BLUE



A0890

CONSTELLATION
DREAM SWEETHEART
GOWN W/CORSET

SIZE: 2 ~ 16

◆ LT SILVER
◆ DUSTY BLUE



A0672

OPHELIA BEAD STRAP
TULLE GOWN

SIZE: 2 ~ 16

◆ ROSEWOOD
◆ SMOKY BLUE



A1220

PEONY PETAL COUTURE GOWN

SIZE: 2 ~ 14

- ◆ BLUE
- ◆ LAVENDER



A1191

ALICIA FLORAL EMBROIDERY GOWN

SIZE: 2 ~ 18

- ◆ ENGLISH VIOLET
- ◆ PARIS BLUE
- ◆ YELLOW
- ◆ SAGE



A1201

CHROMATIC 3D FLORALS
MERMAID GOWN

SIZE: 2 ~ 16

- ◆ BLUE
- ◆ EMERALD
- ◆ LAVENDER
- ◆ RED
- ◆ ROYAL



A1206

GARDEN LACE HALTER
GOWN W TIER SKIRT

SIZE: 2 ~ 14

◆ GREENERY
◆ LAVENDER



AL
ANDREA & LEO
couture



ANDREA & LEO
EVENING



A1343

FOREST HAZE
RUFFLE GOWN

SIZE: 2 ~ 16

SEAFOAM BLUE ✦



A1318

LIMONCELLO
BEAD RUFFLE GOWN

SIZE: 4 ~ 14

◆ YELLOW



A1340

AURORA ALLURE
GOWN

SIZE: 2 ~ 16

◆ BLUSH



A1219

PEARL PLEATED TULLE
GOWN W CAPE

SIZE: 4 ~ 18

- ◆ BLUSH
- ◆ DUSTY LAVENDER
- ◆ SAGE



A1235

TWILIGHT GARDENIA
GOWN

SIZE: 4 ~ 16

◆ DUSTY BLUE



A1231

EVENING SONATA
LACE GOWN

SIZE: 2 ~ 18

◆ AMETHYST
◆ DUSTY ROSE



A1289

PRAIRIE EMBROIDERY GOWN

SIZE: 2 ~ 16

◆ CHAMPAGNE ◆



A1288

WATERCOLOR FLORAL
GOWN

SIZE: 2 ~ 16

WHITE-FLOWERS



A1290

ROSEGARDEN PRINT
GOWN

SIZE: 2 ~ 14

BLUSH



A1225

FEATHERED FANTASY
GOWN

SIZE: 2 ~ 12

◆ LILAC



A1339

ELYSIUM LACE CORSET
GOWN

SIZE: 2 ~ 16

◆ LT BLUE



A1325

STARFALL RUFFLE
MERMAID GOWN

SIZE: 2 ~ 14

◆ SILVER ◆



A1260

EDEN EUPHORIA
RUFFLE GOWN

SIZE: 2 ~ 16

SAGE ◆



A1167

AZURITE BEADED LONG SLV
A-LINE GOWN

SIZE: 4 ~ 18

◆ BLUE

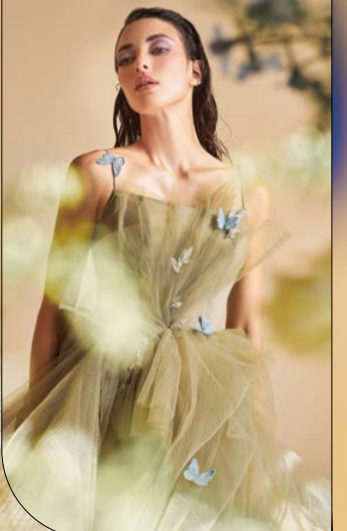


A1113

DANCING BUTTERFLIES
PLISSE BALL GOWN

SIZE: 2 ~ 16

◆ GREENERY ◆



A1176

PETAL EMBELLISHED RUFFLE
SLEEVE GOWN

SIZE: 6 ~ 18

◆ BLUSH



A1314

MOONLIT SERAPHIM
CRYSTAL GOWN

SIZE: 6 ~ 18

◆ SILVER



A1348

MIRAGE GOWN WITH
REMOVABLE SHAWL

SIZE: 4 ~ 18

ENGLISH VIOLET ◆



A1342

SPRING LOVE LACE
GOWN

SIZE: 8 ~ 22

- ◆ ROSE
- ◆ SMOKY BLUE



A1335

NOCTURNE
RUFFLE GOWN

SIZE: 2 ~ 14

◆ BLACK-NUDE



A1297

GARNET GLIMMER
FEATHER GOWN

SIZE: 2 ~ 16

RED ◆



A1293

MAGENTA MAJESTY
GOWN

SIZE: 2 ~ 16

◆ MAGENTA



A1171

EMERALD DUST FEATHER
MERMAID GOWN

SIZE: 2 ~ 18

◆ EMERALD



A1319

PEARL PHANTASM GOWN

SIZE: 2 ~ 16

◆ BLACK
◆ BURGUNDY



A1345

ROSE REVERIE GOWN

SIZE: 2 ~ 14

◆ RED ◆



A1251

NAVY NOSTALGIA
BEAD GOWN

SIZE: 2 ~ 16

◆ NAVY



A1346

REVERIE STRAPLESS
GOWN

SIZE: 2 ~ 14

SAGE ◆



A1326

BANQUET
BREEZE GOWN

SIZE: 2 ~ 18

- ◆ BURGUNDY
- ◆ EMERALD
- ◆ NAVY



A1256

DIAMOND DREAM
GOWN

SIZE: 2 ~ 16

◆ SILVER-NUDE



A1298

SEAFOAM FEATHER GOWN

SIZE: 2 ~ 16

◆ BLUE



A1229

SERENADE FEATHER
GOWN

SIZE: 2 ~ 16

- ◆ BLACK-NUDE
- ◆ EMERALD
- ◆ MAUVE
- ◆ ROYAL
- ◆ SILVER-NUDE



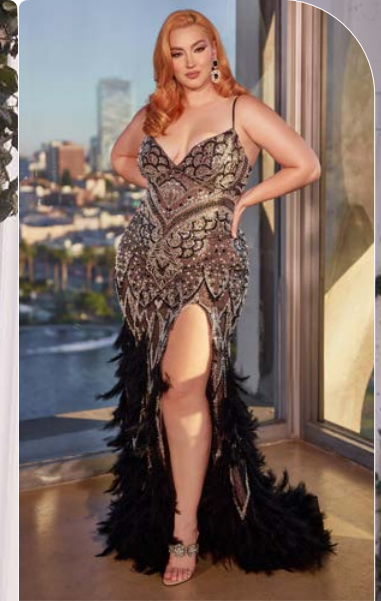


A1229C

SERENADE FEATHER GOWN

SIZE: 18 ~ 24

- BLACK-NUDE
- EMERALD
- ROYAL
- SILVER-NUDE



A1268

NEBULA METALLIC
BEAD GOWN

SIZE: 6 ~ 16

◆ DARK SILVER



A1278

LAPIS LUXE BEAD
GOWN

SIZE: 2 ~ 20

LAPIS BLUE ◆



A1273

LAVENDER
LUMINESCENCE GOWN

SIZE: 4 ~ 16

◆ ENGLISH VIOLET



A1230

LUMINOSITY
CRYSTAL GOWN

SIZE: 2 ~ 16

SILVER-NUDE ◆



A1312

WHISPERING NYMPH GOWN

SIZE: 2 ~ 18

◆ SILVER-NUDE



A1257

DIAMOND
DEWDROP GOWN

SIZE: 4 ~ 18

◆ DUSTY MAUVE ◆



A1228

TWILIGHT RUFFLE LACE
GOWN

SIZE: 2 ~ 18

◆ BLACK-NUDE



A1337

SCARLET BEAUTY
RUFFLE GOWN

SIZE: 2 ~ 16

RED ◆





A1017

CORSET PRINCESSA RUFFLE
TULLE BALL GOWN

SIZE: 2 - 14

BLUSH ✦
BLACK ✦
PARIS BLUE ✦



A0824

STAR OF MY EYE CORSET
TULLE A-LINE

SIZE: 2 - 16

MIDNIGHT



A1118

GILDED-FLOURET SEQUIN
LACE MERMAID GOWN

SIZE: 2 - 18

- ◆ SMOKY BLUE
- ◆ PLATINUM
- ◆ BURGUNDY
- ◆ EMERALD
- ◆ GOLD



A1048

FAIRYTALE GARDEN COUTURE
BALL GOWN

SIZE: 2 ~ 14

◆ BLUE



A1015

SAGE PLEATED
DRAPE BALL GOWN

SIZE: 2 ~ 16

SAGE ◆



A1127

FELICITY LACE SWEETHEART
TULLE GOWN

SIZE: 2 ~ 16

◆ DUSTY ROSE
◆ HAZE BLUE



A1209

LIT SEQUIN APPLIQUE
OFF SHOULDER GOWN

SIZE: 2 ~ 18

◆ LAVENDER
◆ ROYAL



A1160

LONG SLY BEAD CORSET
GOWN W SATIN SKIRT

SIZE: 6 ~ 14

◆ ROYAL
◆ SMOKY BLUE



A0892

DANCING FLORAL
EMBROIDERY V-NECK
BALL GOWN

SIZE: 2 ~ 12

SAGE ◆



A1116

REGALITY FEATHER
MERMAID GOWN

SIZE: 2 - 18

- BLACK
- DUSTY BLUE
- HOT PINK
- MAUVE
- ORANGE
- SILVER
- SILVER-NUDE





A1029

ANGELONIA DIAMOND
GLITTER CORSET GOWN

SIZE: 2 ~ 18

MAUVE
HAZE BLUE



A1035

PORTRAIT OF A ROSE PRINTED
ORGANZA GOWN

SIZE: 2 ~ 16

MULTI



A0850

DREAMER FLORAL
BEADED OMBRE
BALLERINA GOWN

SIZE: 2 ~ 18

◆ BLUSH-MAUVE
◆ SMOKY BLUE



A1135

LISIANTHUS PRINTED
ORGANZA GOWN

SIZE: 2 ~ 10

LILAC ◆



A1107

JOLIE SHIMMER CORSET
MERMAID GOWN

SIZE: 2 - 20

- BLACK
- EMERALD
- ROSE GOLD
- SMOKY BLUE



A1143

IRIDESCENT SEQUIN
APPLIQUE PLEATED GOWN

SIZE: 2 ~ 18

- ◆ BLUE JAY
- ◆ MAUVE



A1131

IRIDESCENT LACE
MERMAID GOWN

SIZE: 2 ~ 14

- ◆ BLUE
- ◆ BLUSH
- ◆ YELLOW



A1140

ONE SHOULDER
GODDESS TULLE GOWN

SIZE: 2 ~ 14

- ◆ PARIS BLUE
- ◆ DUSTY ROSE
- ◆ LAVENDER
- ◆ YELLOW



A1138

FLOWERET BACKLESS
A-LINE GOWN

SIZE: 2 ~ 14

- ◆ SPRING BLUSH
- ◆ LAVENDER
- ◆ BLUE
- ◆ YELLOW



A1132

ENGLISH GARDEN
A-LINE GOWN

SIZE: 2 ~ 12

- ◆ BLUE
- ◆ YELLOW



A1115

SHIMMERING DAISY
MERMAID GOWN

SIZE: 2 ~ 14

- ◆ LT BLUE
- ◆ DUSTY ROSE
- ◆ YELLOW



A1124

MOONDUST FLORENTINE
A-LINE GOWN

SIZE: 2 ~ 18

◆ BLUE
◆ SPRING BLUSH



A1207

OFF SHOULDER
BOUQUET LACE GOWN
W SHORT SKIRT

SIZE: 2 ~ 16

◆ BLUSH
◆ LAVENDER



A1125

PASTEL ELYSIUM LACE
V-NECK GOWN

SIZE: 2 ~ 14

- ◆ BLUE
- ◆ LAVENDER
- ◆ SAGE



A1144

BLOOM BEAD STRAP
TULLE GOWN

SIZE: 2 ~ 14

- ◆ SMOKY BLUE ◆



A1149

OFF THE SHOULDER BIRDS OF ROMANCE A-LINE GOWN

SIZE: 2 ~ 16

◆ DUSTY LAVENDER
◆ HAZE BLUE



A1157

ROSE-TINTED GLASS BEAD GOWN
W MATCHING GLOVES

SIZE: 2 ~ 16

◆ MAUVE ◆



A0894

NIGHT ROSE BEADED
EMBROIDERY GOWN
W/OVERSKIRT

SIZE: 2 ~ 16

◆ PARIS BLUE
◆ MAUVE



A1163

DUSK GLASS BEAD GOWN W
MATCHING GLOVES

SIZE: 6 ~ 16

◆ SMOKY BLUE
◆ ENGLISH VIOLET



A1141

FLUTTERING BUTTERFLY
APPLIQUE GOWN

SIZE: 2 ~ 16

◆ DUSTY ROSE
◆ SILVER



A1153

LILIANA EMBELLISHED
CORSET COUTURE GOWN

SIZE: 2 ~ 16

SAGE ◆



A1169

BRUSHED GOLD GOWN
W OVERSKIRT

SIZE: 2 ~ 16

- ◆ BLUE-GOLD
- ◆ CHAMPAGNE GOLD



A1170

DIAMOND ROCOCO
BACKLESS MERMAID
GOWN

SIZE: 2 ~ 12

- ◆ BLACK
- ◆ BLUE
- ◆ MAUVE
- ◆ SEA MIST



A1021

MONARCH BUTTERFLY
TULLE GOWN

SIZE: 2 ~ 14

◆ PALE MAUVE
◆ BLUE



A1032

RUFFLE OFF SHOULDER
COUTURE TULLE GOWN

SIZE: 4 ~ 16

◆ BURGUNDY
◆ EMERALD



A1105

DIAMOND ROCOCO MERMAID
GOWN W
DETACHABLE SLV

SIZE: 4 ~ 14

MAUVE



A1155

CRYSTAL LEAVES
ASYMMETRIC GOWN

SIZE: 4 ~ 18

CERULEAN BLUE
MAUVE



A1023

ANASTASIA FEATHER
DRAPE BEADED
BALL GOWN

SIZE: 4 ~ 16

◆ SILVER



A1025

BLOSSOM LACE PUFF SLEEVE
GOWN

SIZE: 4 ~ 16

◆ BLUSH ◆



A0770

UNDER THE LEMON TREE
FIL COUPE GOWN

SIZE: 2 ~ 10

◆ LEMON



A1211

CRYSTAL STUDED
LACE MERMAID GOWN

SIZE: 2 ~ 14

◆ BLACK
◆ BLUE
◆ PLATINUM



A1091

GEMMA JEWEL BEADED
BALL GOWN

SIZE: 4 ~ 16

MAUVE
SAGE



A1182

SILVER SIREN BEAD
GOWN W OVERSKIRT

SIZE: 4 ~ 16

SILVER



A1184

PEARLSTONE CORSET
MERMAID GOWN

SIZE: 4 ~ 12

◆ PEARL



A1092

CHARLOTTE RIBBON
EMBELLISHED OFF-
SHOULDER GOWN

SIZE: 4 ~ 18

★ MIST



A0997

FULLY PEARLED GATHERED LONG
SLEEVE SHEATH GOWN

SIZE: 4 ~ 22

SAGE

BLUSH

DUSTY BLUE



A1180

PEARLEQUE BALL GOWN
W CRYSTAL STRAP

SIZE: 4 ~ 16

◆ BLUSH



A1200

SEQUIN LACE
OFF SHOULDER
GOWN W OVERSKIRT

SIZE: 6 ~ 16

◆ ROSE GOLD ◆



A0926

LONG SLEEVE SEQUINED
LACE A-LINE GOWN

SIZE: 6 ~ 22

◆ COPPER



A1095

ARI RIBBON EMBELLISHED
BALL GOWN

SIZE: 4 ~ 14

◆ MIST



A1040

TIANA BLOSSOM
APPLIQUE BALL GOWN

SIZE: 2 ~ 14

◆ SAGE



A1057

MEGARA 3D FLOWER
PLEATED GRECIAN GOWN

SIZE: 2 ~ 16

MAUVE ◆
BLUE ◆



A1046

WILLOW GOWN W/
DETACHABLE PUFF
SLEEVES

SIZE: 2 - 18

- BLUSH
- PARIS BLUE
- SAGE



A1028

GARDENIA DIAMOND GLITTER
V-NECK BALL GOWN

SIZE: 2 - 16

- MAUVE
- BLUE



A0893

VIRGINIA EMBROIDERY
V-NECK BALL GOWN

SIZE: 2 - 18

PARIS BLUE
BLUSH



A1024

DIANA LACE LONG SLEEV
BALL GOWN

SIZE: 6 - 18

FRENCH VIOLET



A1173

DIAMOND OMBRE
LONG SLV GOWN

SIZE: 10 ~ 14

◆ SMOKY BLUE



A1174

SHIMMER LEAF MOTIF BALL
GOWN W MATCHING SHAWL

SIZE: 6 ~ 24

MAUVE ◆
GOLD ◆
SILVER ◆
SMOKY BLUE ◆





ANDREA & LEO
COCKTAIL

A1226

REGAL GREENERY TEA
LENGTH DRESS

SIZE: 4 ~ 16

◆ SAGE



A1227

STAR OF MY EYES TEA
LENGTH DRESS

SIZE: 2 ~ 18

BLACK ◆



A0823

CONSTELLATION CORSET
TULLE A-LINE COCKTAIL

SIZE: 2 ~ 14

◆ BLACK
◆ SILVER



A1347

BLOSSOM BALLETT
DRESS

SIZE: 2 ~ 16

- ◆ NAVY
- ◆ OFF WHITE-NUDE
- ◆ ORCHID
- ◆ ROSE GOLD



A1309

OMBRE RUFFLE
TEA LENGTH DRESS

SIZE: 2 ~ 16

◆ DUSTY LAVENDER



A0862

LONG SLEEVE EMBROIDERED
LACE TULLE COCKTAIL

SIZE: 2 ~ 18

◆ MOONLIGHT BLUE
◆ BLUSH



A110

RHINESTONE COCKTAIL
DRESS W DETACHABLE
BOW

SIZE: 2 ~ 12

- ◆ CHAMPAGNE
- ◆ PARIS BLUE
- ◆ LAVENDER



A1190

CRYSTAL DRIP COCKTAIL DRESS
W FEATHER HEM

SIZE: 4 ~ 14

SILVER ◆



A114

ROSE GOLD BUTTERFLY
TEA GOWN

SIZE: 2 ~ 16

◆ ROSE GOLD



A1012

WREN DRESS

SIZE: 2 ~ 16

MAUVE ◆
WHITE ◆
BLACK ◆



A1195

BUTTERFLY GARDEN
TEA GOWN

SIZE: 4 ~ 12

◆ BLUSH



A1197

BABY BREATH
EMBROIDERY TEA GOWN

SIZE: 2 ~ 16

◆ IVORY GREEN



A1196

ENGLISH GARDEN
TEA GOWN

SIZE: 2 ~ 14

◆ BLUSH
◆ BLUE





AL

ANDREA & LEO
couture



BUST

The fullest part of the bust (keep measuring tape horizontal)

WAIST

The slimmest part of your natural waistline: above your navel and below your ribcage

LOW HIP

The fullest part of your hips at the top of your legs

SIZE CHART

Measure your chest-waist-hip to find your perfect size.

INDICATED IN INCHES
SIZE CHART IS UNIQUE TO ANDREA & LEO

Chart #0

SIZE	2	4	6	8	10	12	14	16	18	20	22	24
BUST	32	34	35	36	37.5	39	41	43.25	45.5	48	50.5	53.5
WAIST	25	27	28	29	30.5	32.25	34.25	36.5	39	42	45	48
HIP	35	37	38	39	40.5	42.25	44.25	46.5	49	52	55	58

Chart #AL

SIZE	2	4	6	8	10	12	14	16	18	20	22	24
BUST	32.5	34	35	36	37	38	40	42	44	47	50	53
WAIST	24	26.5	27.5	29	30	31	33	35	37	40	43	46
HIP	36	37.5	38.5	39.5	40.5	41.5	43.5	46	48	50.5	53.5	56.5

RETURN & EXCHANGE

- All sales are Final on our merchandise. No refunds or returns are accepted.
- We request that you carefully select your online purchases. Please keep in mind that we follow Universal / Industry Standard for Return and Exchange policy of formal wear
- We do not accept returns and exchange unless the item was damaged upon receipt. Unless dresses are damaged, defective, or incorrectly delivered (i.e. incorrect item is delivered, delivered past wear date, delivered to address other than provided at time of order, etc.), they CANNOT be returned or exchanged. If the dress you received is damaged, defective, or incorrectly delivered, we will accept a return for re-inspection in order to assess the problem and determine the best way to correct it.
- You wish to return for re-inspection must be shipped back to our store and received within 5 business days from time the package was delivered. The dress MUST be shipped before the wear date as submitted on your order. Refunds will not be credited or replacements/ repairs will not be made if we do not receive your return within 5 business days from the day the package was delivered to you, no exceptions
- Returned dress must be in excellent, unworn condition, packaged securely in the original or comparable packaging. When returned for re-inspection, the dress must be in perfect, new, never worn, condition as received at the time of delivery. It must not be damaged, soiled, stained, torn, and be free of offensive odors (i.e. smoke). Customer is responsible for all return shipping costs. We will not refund return shipping fees unless the dress is determined to be damaged, defective, or incorrectly delivered. In order to return your dress for re-inspection,

* We cannot send you the exchange until the damaged merchandise is received by us, and subject may take up to 5 business days.

* Shipping charges and rush fees are non-refundable.

* Special Sale items / Clearance items are Final Sale, and they are not returnable. No exception.

MOODBOARD ON INSTAGRAM & PINTEREST

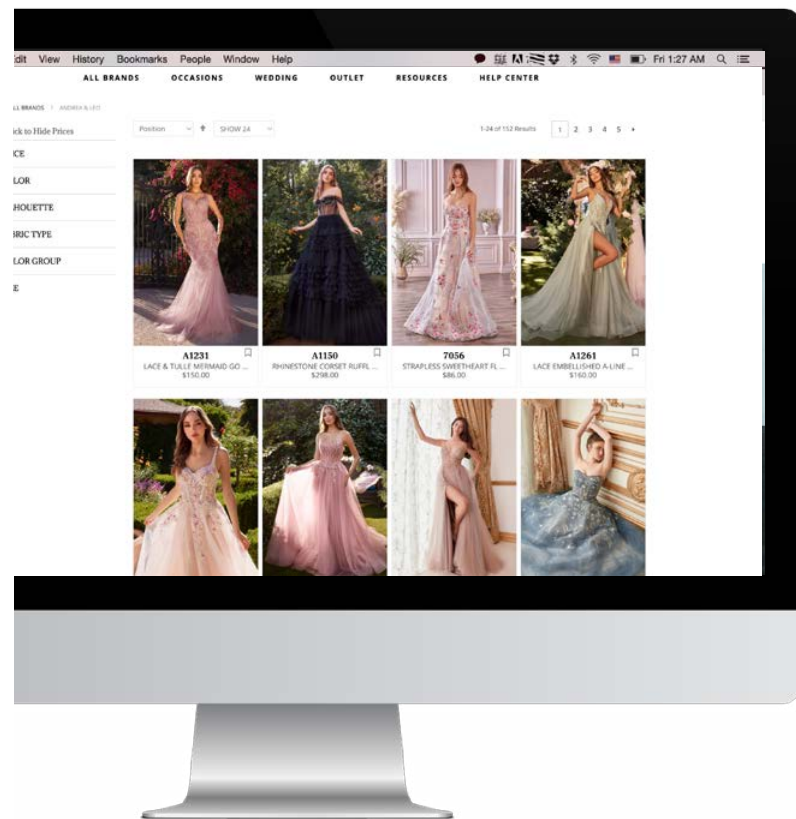
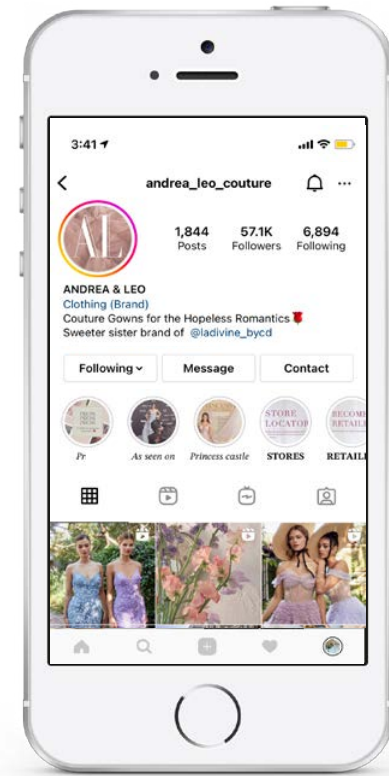
We would love to engage with you.

Follow us on Instagram & Pinterest and see our moodboard continue to evolve daily.

IG: @ANDREA_LEO_COUTURE

TIKTOK: @ANDREALEO_COUTURE

PINTEREST: @ANDREAANDLEO



WEBSITE RETAILER LOGIN

Register to unlock prices & see in-stock inventory at our website. If you have any inquiry, email sales@andrealeocouture.com

ORDER.LADIVINE.COM

CONTACT US

SALES DIVISION
sales@andrealeocouture.com

CREATIVE/PR DIVISION
connect@andrealeocouture.com

WHOLESALE WEBSITE
ORDER.LADIVINE.COM
PUBLIC WEBSITE
ANDREALEOCOUTURE.COM

ADDRESS
1433 GRIFFITH AVE
LOS ANGELES, CA 90021

PHONE
213.342.3781

SUBSCRIPTIONS
SIGN UP ON OUR WEBSITE
TO UNLOCK PRICES, VIEW INVENTORY AND BE NOTIFIED FOR SPECIAL EVENTS & SALES

We sell to re-sellers only and as such we are required by law to verify your reseller status. Our online catalog is available to everyone, but to gain access to the price list, inventory, a registered account is required.



Andrea & Leo Couture

WWW.ANDREALEOCOUTURE.COM

WHOLESALE:

ORDER.LADIVINE.COM

SALES@ANDREALEOCOUTURE.COM

+1 213.342.3781