

La Divine

BY CINDEL ELLIOTT DIVINE



VOL.35

SS 24 COLLECTION

PROM

DRESS FEATURED:
CDS439 IN SILVER, CD821 IN BLACK

Ladivine

BY CINDERELLA DIVINE

2024 SPRING / SUMMER COLLECTION
PROM | EVENING | SPECIAL OCCASION

Ladivine by Cinderella Divine is a premier Los Angeles brand known for aspirational gowns that embrace both modernity & sensuality. As a trusted name in the industry, Ladivine formerly known as Cinderella Divine has evolved to be a best-kept secret known for statement gowns with the perfect fit. The season's latest trends are translated into body-focused silhouettes ready for overnight fame. Inspired by the feminine figure, we strive to design the perfect dress for women of every size, age, and personality as they step forward to their unforgettable moments in the spotlight.

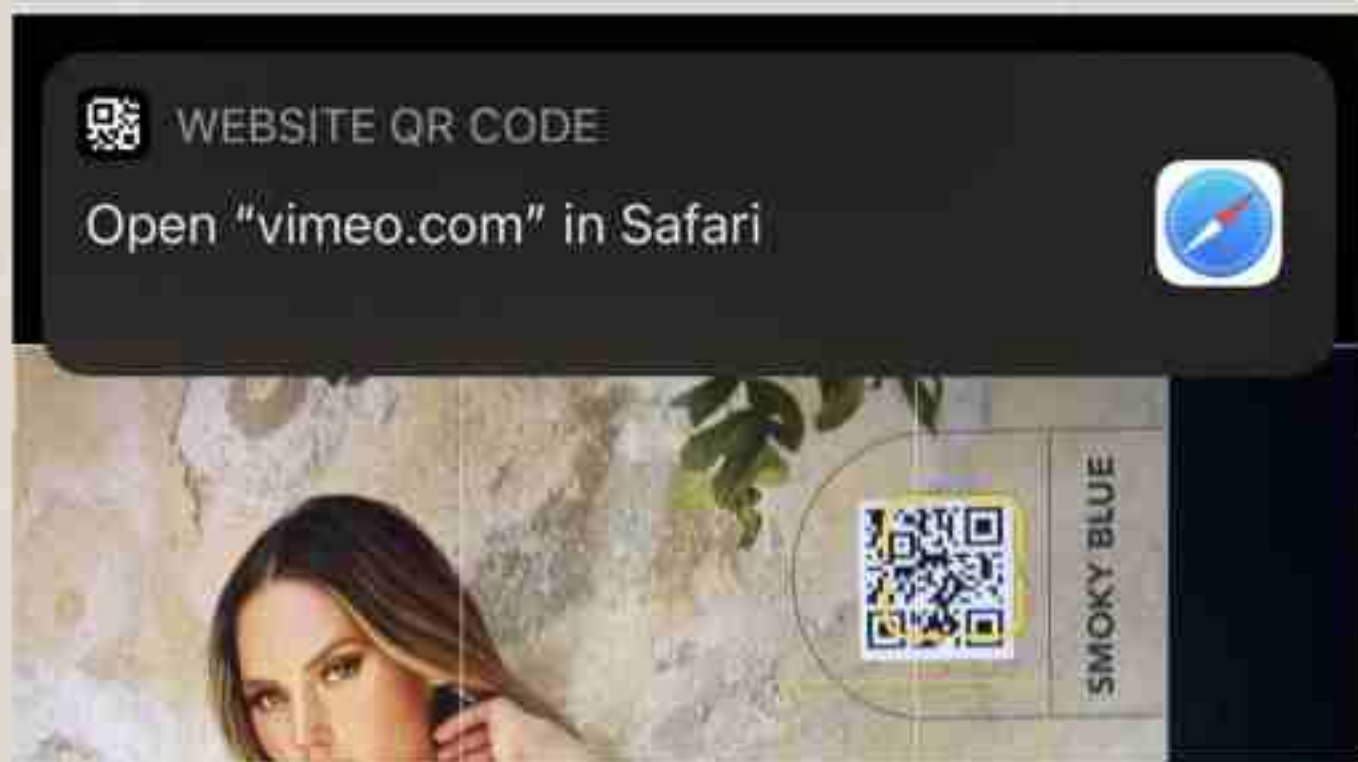
SS24

VOL. 35
PROM
COLLECTION

TRY OUR QR VIDEO CATALOG



SCAN THIS QR CODE
TO WATCH THE ENTIRE CATALOG
AS A VIDEO



To see videos & download:

1. Open camera app on the smart phone.
2. Focus on the QR code.
3. Tap on the Vimeo link.
4. Press play and enlarge if desired.
5. Back to Camera app to scan another QR code.



DRESS FEATURED:
CDS440 IN DUSTY BLUE

CC2308

SIZE: 2 ~ 16

- AZALEA PINK
- BLACK
- EMERALD
- LAVENDER
- LT BLUE
- MAUVE
- NAVY
- ROSE GOLD
- ROYAL
- SILVER-NUDE
- NOVA PURPLE



KV1095

SIZE: 2 ~ 18

- BLUE
- DEEP RED
- DUSTY ROSE
- ROYAL
- SAGE



CB136

SIZE: 2 ~ 14

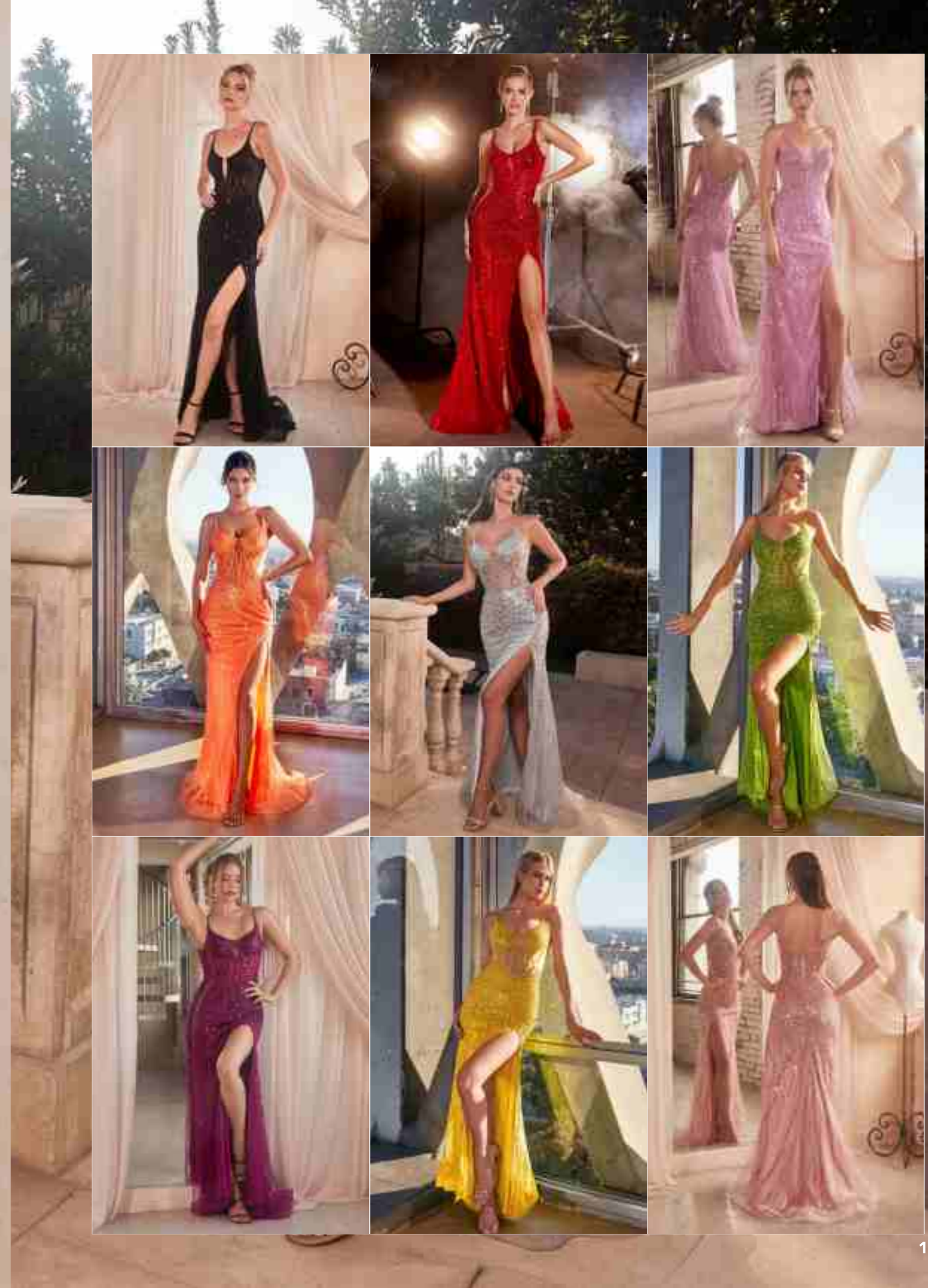
- BLUE
- LAVENDER
- SAGE



CD0220

SIZE: 2 ~ 16

- BLACK
- BLOSSOM PINK
- GREENERY
- ORANGE
- ORCHID
- RED
- ROSE GOLD
- SILVER
- SMOKY BLUE
- YELLOW



CZ0025

SIZE: 2 ~ 16

● SILVER-NUDE



CD830

SIZE: 2 ~ 18

● AZURE

○ BLACK

● GREENERY



OC020

SIZE: 2 ~ 16

- DUSTY BLUE
- DUSTY ROSE
- LAVENDER



CD0193

SIZE: XXS ~ 3X

- SAGE
- SMOKY BLUE



9316

SIZE: 2 ~ 14

- BLUE
- PINK



CR871

SIZE: 2 ~ 14

- OCEAN BLUE



WITH THE DREAMLIKE QUALITY OF *BALLET*, 2024 will be filled with lace, tulle, ruffles and shimmer. Combining ethereal sensuality. Airy styles is one of the biggest emerging trends in fashion. This trend celebrates delicate tulle skirts, soft pastel hues, and elegant wrap tops, reminiscent of ballet attire. Designers are incorporating ballet-inspired elements such as ribbons, lace-up details, and pointe shoe-inspired footwear into their collections, Designers are incorporating ballet-inspired elements such as ribbons, lace-up details, and pointe shoe-inspired footwear into their collections, creating a whimsical and romantic aesthetic.

TRENDING:

PRIMA BALLERINA



CC8915



D553



CD3920



CB142



CD0217



CD0225

CD868

SIZE: 2 ~ 16

- BLACK
- DUSTY BLUE
- GOLD
- GREENERY
- RED
- SILVER



CD332

SIZE: 2 ~ 14

- ENGLISH VIOLET
- PARIS BLUE



CD3920

SIZE: 2 ~ 12

- BLUE



J869

SIZE: 2 ~ 16

- DUSTY LAVENDER
- DUSTY MAUVE
- EMERALD
- LAPIS BLUE
- MAGENTA
- ROYAL



CD0230

SIZE: 2 ~ 18

- AMETHYST
- BLACK
- EMERALD
- LT BLUE
- MOCHA GOLD
- RED
- ROSE GOLD
- SAGE
- SMOKY BLUE



D145

SIZE: 2 ~ 14

● LAVENDER

● LT BLUE

● PINK

● SAGE

● YELLOW





TRENDING:

FEELING BLUE



CALMING BLUE



FEELING BLUE CALMING SHADES OF BLUE FROM DESATURATED PASTEL BLUE TO DUSTY HUES WILL BE THE COLOR OF 2024 SPRING. ACROSS THE GLOBE, THIS COLOR HAS BEEN A CONSTANT PRESENCE ON THE RUNWAYS, FROM JASON WU, PROENZA SCHOULER, AND LAQUAN SMITH IN NEW YORK TO EMILIA WICKSTEAD AND J.W. ANDERSON IN LONDON TO FENDI AND ALBERTA FERRETTI IN MILAN. WE EXPECT TO SEE THIS COLOR CRUSH EVERYWHERE. THE TREND'S EMPHASIS ON LIGHT BLUE EMBODIES A TRANQUIL YET CHIC AESTHETIC.

CD295

SIZE: 2 ~ 16

- BLACK
- DUSTY ROSE
- EMERALD
- FUCHSIA
- MARIGOLD
- PARIS BLUE
- RED
- SUNKISS ORANGE



9315

SIZE: 2 ~ 18

LT BLUE

SAGE



CR868

SIZE: 2 ~ 14

LILAC



CB142

SIZE: 2 ~ 14

● BLUSH



CC8915

SIZE: 2 ~ 16

● LT BLUE

● RED



CD0217

SIZE: 4 ~ 16

- AMETHYST
- BLACK
- DEEP BLUE
- DUSTY LAVENDER
- MAGENTA
- MOCHA GOLD
- SIENNA
- SMOKY BLUE



CD811

SIZE: 2 ~ 16

- BLACK
- BLUE



7498

SIZE: 4 ~ 18

- BLACK
- BURGUNDY
- EMERALD
- SIENNA



CH127

SIZE: XS ~ XL

- BLACK
- GOLD
- MULTI



CD259

SIZE: 2 ~ 14

- LAVENDER
- ROSE GOLD
- ROYAL



CD935

SIZE: 4 ~ 18

- BLACK
- ROSE GOLD
- SILVER-NUDE



CM347

SIZE: 2 ~ 14

- AZALEA PINK
- BLUE
- SAGE



CDS470

SIZE: 2 ~ 16

- DUSTY BLUE
- FUCHSIA
- LAVENDER
- NEON ORANGE
- ROYAL



C150

SIZE: 2 ~ 16

- BLUE
- DUSTY TEAL
- EMERALD
- MAUVE
- RED



C154

SIZE: 4 ~ 16

- BLUE
- DUSTY MAUVE
- EMERALD
- LAVENDER
- NAVY



KV1100

SIZE: 4 ~ 16

● BLACK



CD846

SIZE: 2 ~ 18

BLACK-SILVER ●



OC021

SIZE: 2 ~ 14

- CYAN BLUE
- DUSTY MINT
- LAVENDER
- LT BLUE
- RED



D553

SIZE: 2 ~ 12

- LT BLUE





TRENDING:

SUGAR RUSH

BRIGHT COLOR AND SUGARY CANDY EMBELLISHMENT STORY

IT'S THE EYE POPPING, SUGAR-SWEET TAKE ON BRIGHT COLORS THAT MAIN CHARACTER GIRLIES ARE SEARCHING FOR.



CDS484

SIZE: 2 ~ 18

- BLACK
- EMERALD
- MAGENTA
- ROYAL



CD306

SIZE: 2 ~ 14

- BLACK
- LT BLUE
- MARIGOLD
- PINK
- RED



CB139

SIZE: 2 ~ 14

- HOT PINK
- LAVENDER
- OCEAN BLUE
- ROYAL



CD331

SIZE: 2 ~ 14

- FUCHSIA



CR872

SIZE: 2 ~ 12

● FUCHSIA



CK946

SIZE: 2 ~ 10

● ORANGE



CM342

SIZE: 2 ~ 16

- MULTI
- OCEAN BLUE
- PURPLE



CK937

SIZE: 2 ~ 16

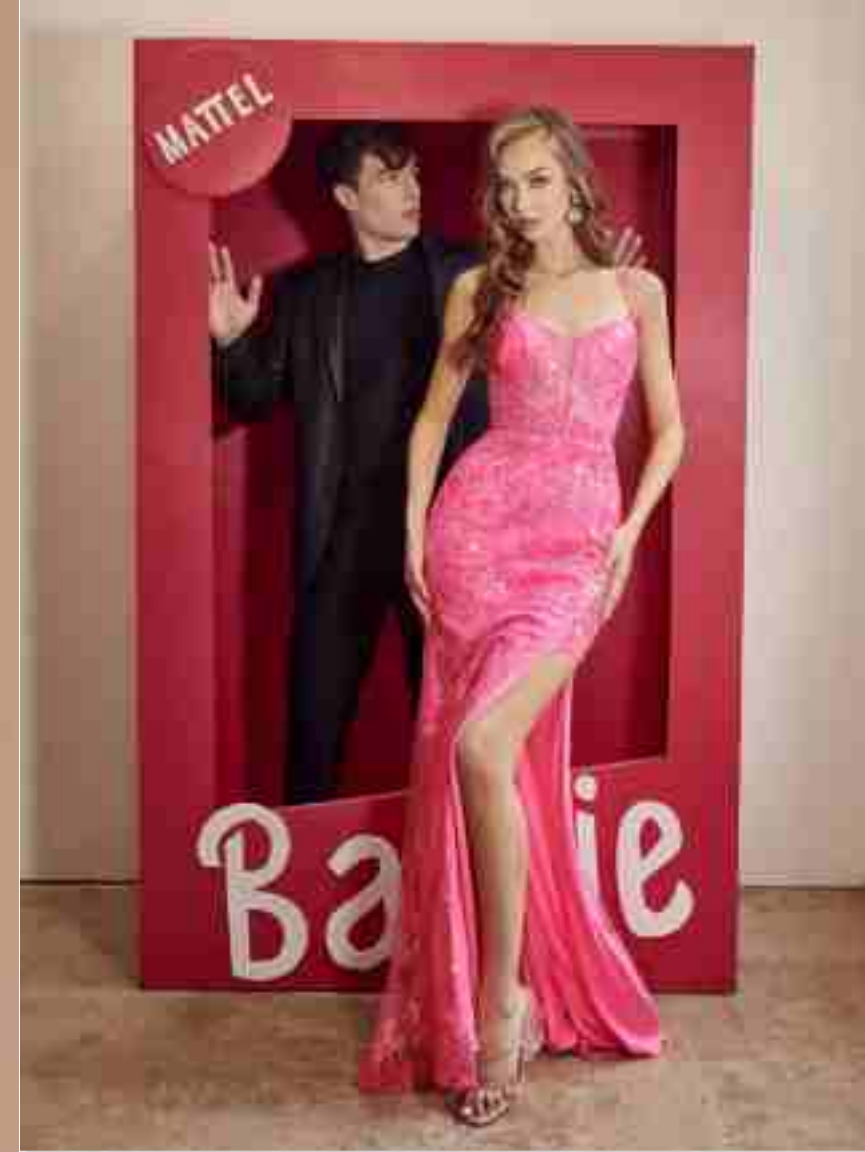
- AZALEA PINK
- EMERALD
- GOLD
- GREENERY
- HOT PINK
- ORANGE



C140

SIZE: 2 ~ 12

- EMERALD
- HOT PINK
- LAVENDER
- OPAL BLUE
- OPAL BLUSH
- ROYAL



CM331

SIZE: 4 ~ 8

- NEON ORANGE
- NEON PINK

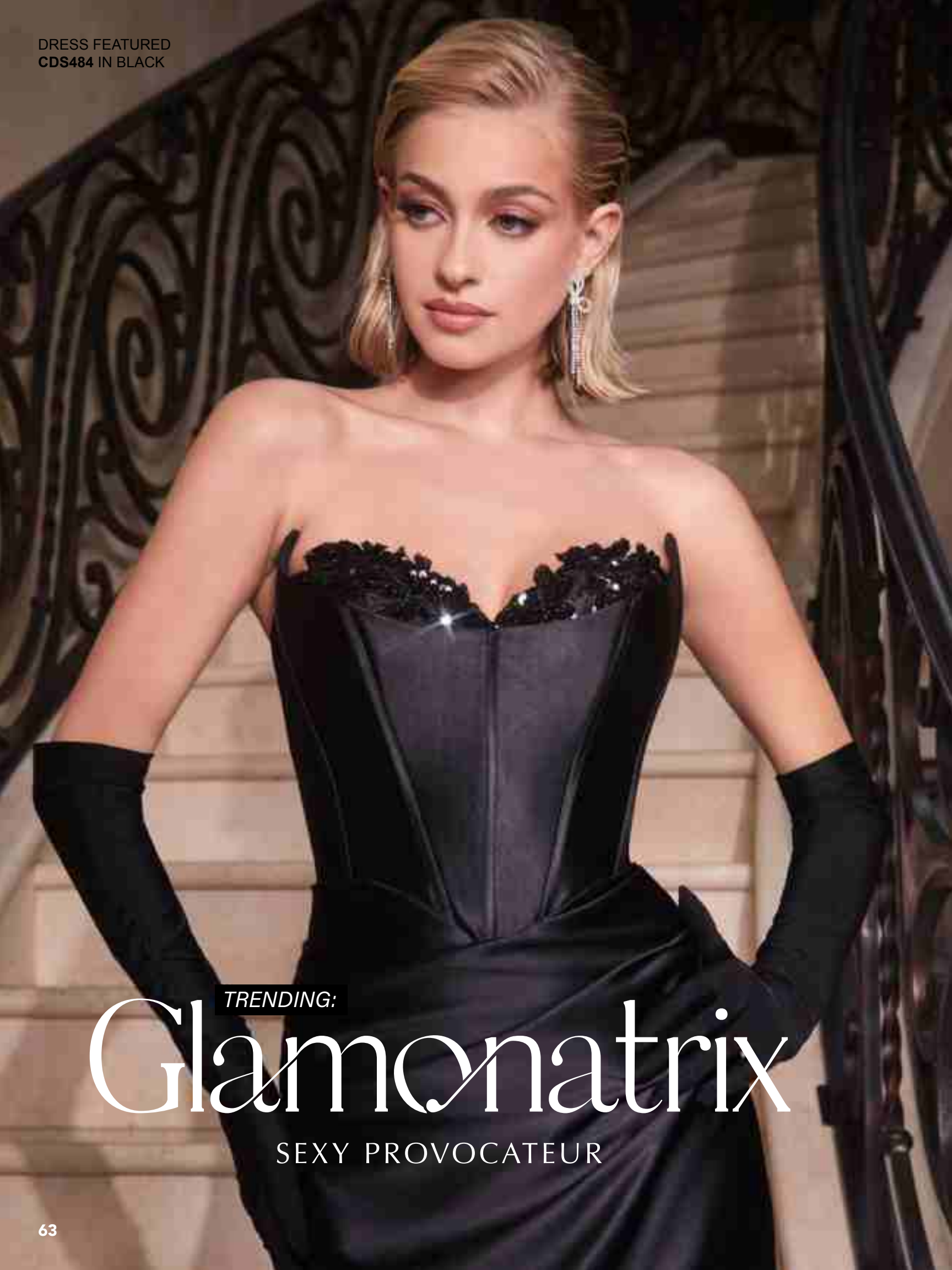


NEON GREEN ●

SIZE: 2 ~ 8

CD286

DRESS FEATURED
CDS484 IN BLACK



CC6018



CDS450



CDS423

DEVIL HORN NECKLINE & DOMINATRIX CORSETRY 2024 SCENE OF EVENINGWEAR IS BECOMING SPICY. THIS AUDACIOUS STYLE REIMAGINES THE ESSENCE OF A SEXY PROVOCATEUR, BLENDING BOLD SENSUALITY WITH HIGH FASHION. AT ITS CORE ARE STRIKING DESIGN ELEMENTS LIKE POINTED DEVIL-HORN NECKLINE AND DOMINATRIX-INSPIRED CORSETRY, ALL WRAPPED IN A PALETTE OF VIXEN COLORS THAT COMMAND ATTENTION. THIS TREND EXUDES A FIERCE, UNAPOLOGETIC SENSUALITY AND CONFIDENCE.



CC2167



J858



CC2308

TRENDING:
Glamonatrix
SEXY PROVOCATEUR

CD0199

SIZE: XXS ~ 2X

- BLACK-GREEN
- BLACK-RED
- BLACK-TEAL



CD0216

SIZE: 2 ~ 16

- BLACK-NUDE
- CHAMPAGNE
- RED
- SILVER



KV1094

SIZE: 2 ~ 12

- LILAC
- RED
- ROYAL



CDS486

SIZE: 2 ~ 16

- BLACK



CDS465

SIZE: 2 ~ 14

- BLUE
- EMERALD
- LAVENDER



CC2346

SIZE: 2 ~ 16

- BLACK
- EMERALD
- FUCHSIA
- LT BLUE
- RED
- ROSE
- ROYAL



C146

SIZE: 2 ~ 16

- BLACK
- ROYAL



CD307

SIZE: 2 ~ 16

- BLACK
- EMERALD
- HOT PINK
- LILAC
- ROYAL



B1141

SIZE: 2 ~ 14

- BLACK
- FUCHSIA
- NAVY
- NOVA PURPLE
- RED
- ROYAL
- SAGE
- SILVER





CDS495

CD343

CD306



CZ0025



OC021



CD307



CP639

TRENDING:

BEJEWELLED NECKLINE

Designers are adorning collars and necklines with a dazzling array of crystals, gemstones, and intricate beadwork, transforming everyday staples into works of art. From ethereal evening gowns to tailored blazers and even casual tees, the bejeweled neckline adds a touch of opulence and glamour to every ensemble. It's a trend that speaks to the desire for a touch of sparkle and luxury.



CD342 IN EMERALD 76

CDS487

SIZE: 2 ~ 16

- DEEP RED
- DUSTY BLUE
- EMERALD
- ROSE



CD343

SIZE: 2 ~ 14

- AMETHYST
- BLACK
- PEACOCK
- RED
- SAGE



CD340

SIZE: 2 ~ 14

- MARIGOLD
- NOVA PURPLE
- SMOKY BLUE



CDS454

SIZE: 2 ~ 16

- BLACK
- CHAMPAGNE GOLD
- FUCHSIA
- ROBIN BLUE



CD342

SIZE: 2 ~ 16

- BLACK
- EMERALD
- PINK
- SMOKY BLUE



CH066

SIZE: XXS ~ XL

- BLACK
- BURGUNDY
- EMERALD
- ROSE GOLD
- SAGE



CD339

SIZE: 2 ~ 14

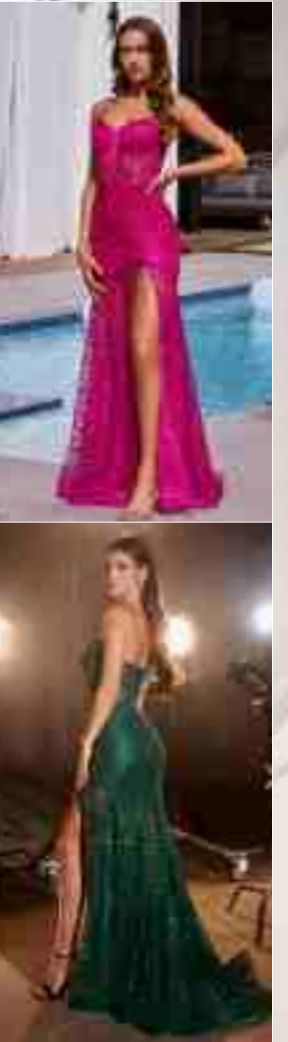
- BLACK
- BLUE
- HOT PINK



C155

SIZE: 2 ~ 16

- EMERALD
- FUCHSIA
- SMOKY BLUE



CDS489

SIZE: 2 ~ 16

- BLACK
- DUSTY BLUE
- MAGENTA
- NOVA PURPLE



CDS483

SIZE: 2 ~ 12

- FUCHSIA
- OCEAN BLUE



DRESS FEATURED
CC1608 IN SAGE



CC2308



The "Feather" trend is soaring to new heights in the fashion world. Designers are incorporating feathers into their collections in imaginative and opulent ways, resulting in garments and accessories that exude glamour. Feather-trimmed dresses and feathered capes take center stage, bringing a touch of whimsy and texture to the runway. Feathers in bold, vibrant colors and exotic textures add a sense of extravagance to eveningwear, while subtler feather accents lend a touch of sophistication to the outfit.

CH147



CH061



Birds of a Feather

CC2358



9312



CC1608

SIZE: 2 ~ 18

- ROSE
- SAGE



CD847

SIZE: 2 ~ 16

SILVER-NUDE ●



CD995

SIZE: 2 ~ 16

- BLUE
- LAVENDER



CH147

SIZE: XS ~ 2X

- BLACK
- DUSTY PINK
- EMERALD
- LAPIS BLUE
- LILAC
- LT BLUE
- NAVY

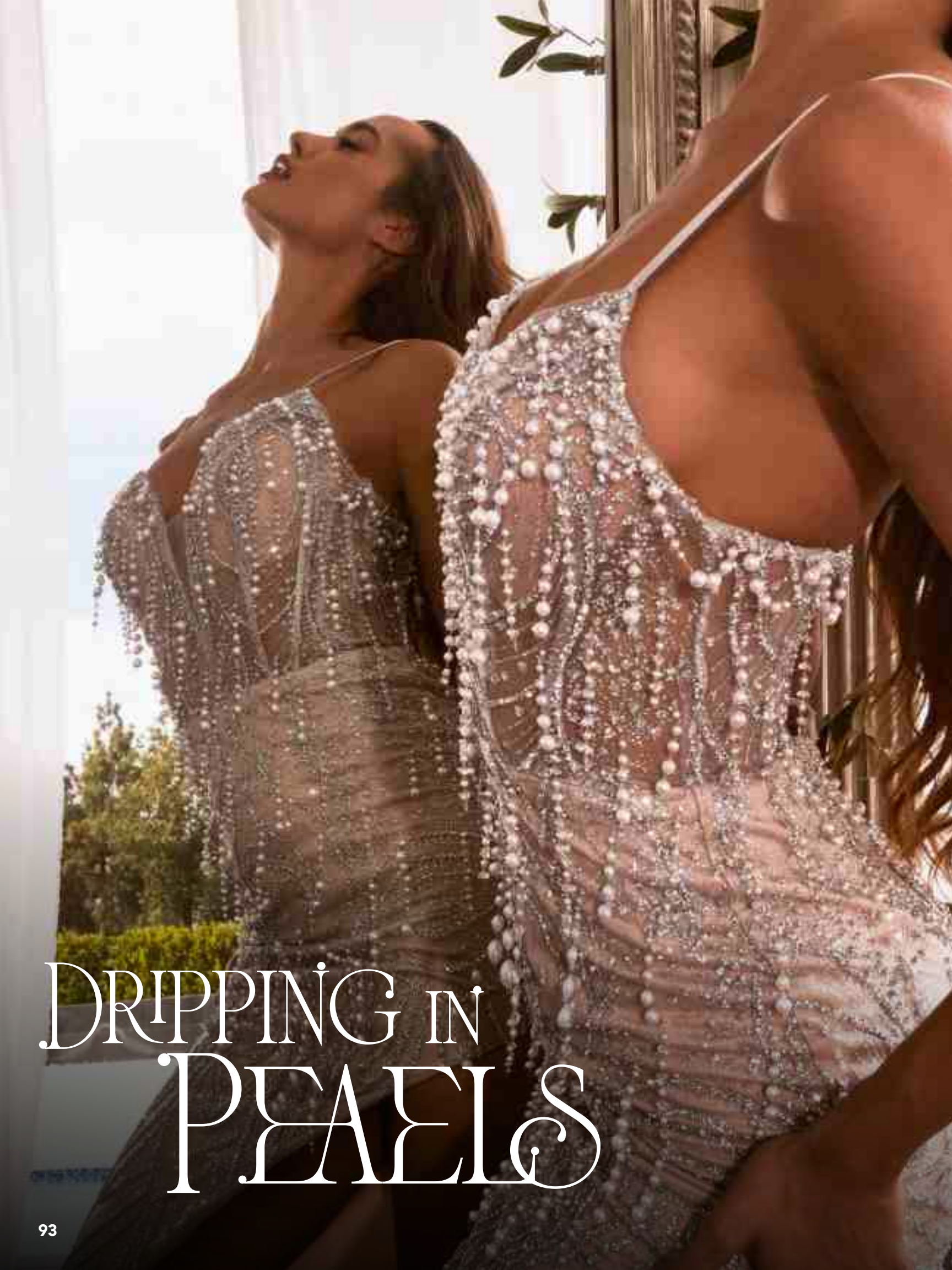


CM328

SIZE: 2 ~ 10

- MAGENTA
- ROYAL





DRIPPING IN PEARLS



CC6377

SIZE: 2 ~ 14

SILVER NUDE ●



CDS482

SIZE: 2 ~ 16

- BLACK
- CHAMPAGNE
- EMERALD



CDS488

SIZE: 2 ~ 16

- NAVY
- SIENNA
- SILVER-NUDE
- SMOKY BLUE



CD818

SIZE: 2 ~ 16

● EMERALD

● ROYAL



CM350

SIZE: 2 ~ 14

● HOT PINK

● ORANGE

● ROYAL

● SEA MIST



CD323

SIZE: 2 ~ 16

- BLACK
- EMERALD
- LT CORAL
- RED
- ROYAL
- SAGE



DRESS FEATURED
CM353 IN FUCHSIA



THE NEW MUSE

— *Brand Yourself* —

CM352

SIZE: 2 ~ 16

● RED



CC2309

SIZE: 2 ~ 14

● BLACK-NUDE



CD831

SIZE: 2 ~ 16

● BLACK



CM334

SIZE: 2 ~ 16

AZURE ●

BLACK ●

EMERALD ●

MAGENTA ●

RED ●



CD3208

SIZE: 2 ~ 22

- BLACK
- EMERALD
- FUCHSIA
- LAVENDER
- NAVY
- RED
- ROYAL



CD293

SIZE: 4 ~ 16

- BLACK
- RED



- BLACK
- GOLD

SIZE: 2 ~ 18

CR844



CDS492

SIZE: 2 ~ 16

- BLACK
- HOT PINK



CD001

SIZE: 2 ~ 16

- BLACK





TRENDING:

Fringe Affair

FRESH TAKE ON THE ROARING 20'S FRINGE IS A REMARKABLE FASHION TREND THAT DEFIES TIME, SEAMLESSLY BLENDING ELEMENTS FROM BYGONE ERAS WITH CONTEMPORARY STYLE. THE ENCHANTING BEAD AND CRYSTAL-SPANGLED FRINGE OF THE '20S, AS WELL AS THE DRAMATIC FLOOR-SWEEPING FRINGE OF THE '70S, CONTINUE TO INFLUENCE TODAY'S FASHION LANDSCAPE, SPANNING FROM HAUTE COUTURE RUNWAYS TO EVERYDAY STREET FASHION. THIS ENDURING TREND IS EXPERIENCING A REVIVAL WITH FRESH INTERPRETATIONS, SUCH AS MODERN TWISTS ON THE ICONIC BEADED FLAPPER AND GATSBY DRESSES OF THE 1920S.



OC020

CDS448

CD867

CD848

CDS486

CDS449

CK997

PINTEREST DATA:
FRINGE DRESS OUTFIT +255%
BEADED FRINGE DRESS +75%
FRINGE WEDDING DRESS +45%

EARRING & HAIR ACCESSORIES FROM AREA

CD346

SIZE: 2 ~ 16

● RED



CDS448

SIZE: 2 ~ 18

● BLACK



CC4004

SIZE: 2 ~ 14

● BLACK



CD840

SIZE: 2 ~ 14

AZALEA PINK ●

AZURE ●

BLACK ●

DUSTY VIOLET ●

EMERALD ●



J872

SIZE: 2 ~ 14

- BLACK
- MAUVE



CK997

SIZE: 2 ~ 14

- SILVER



CDS494

SIZE: 2 ~ 16

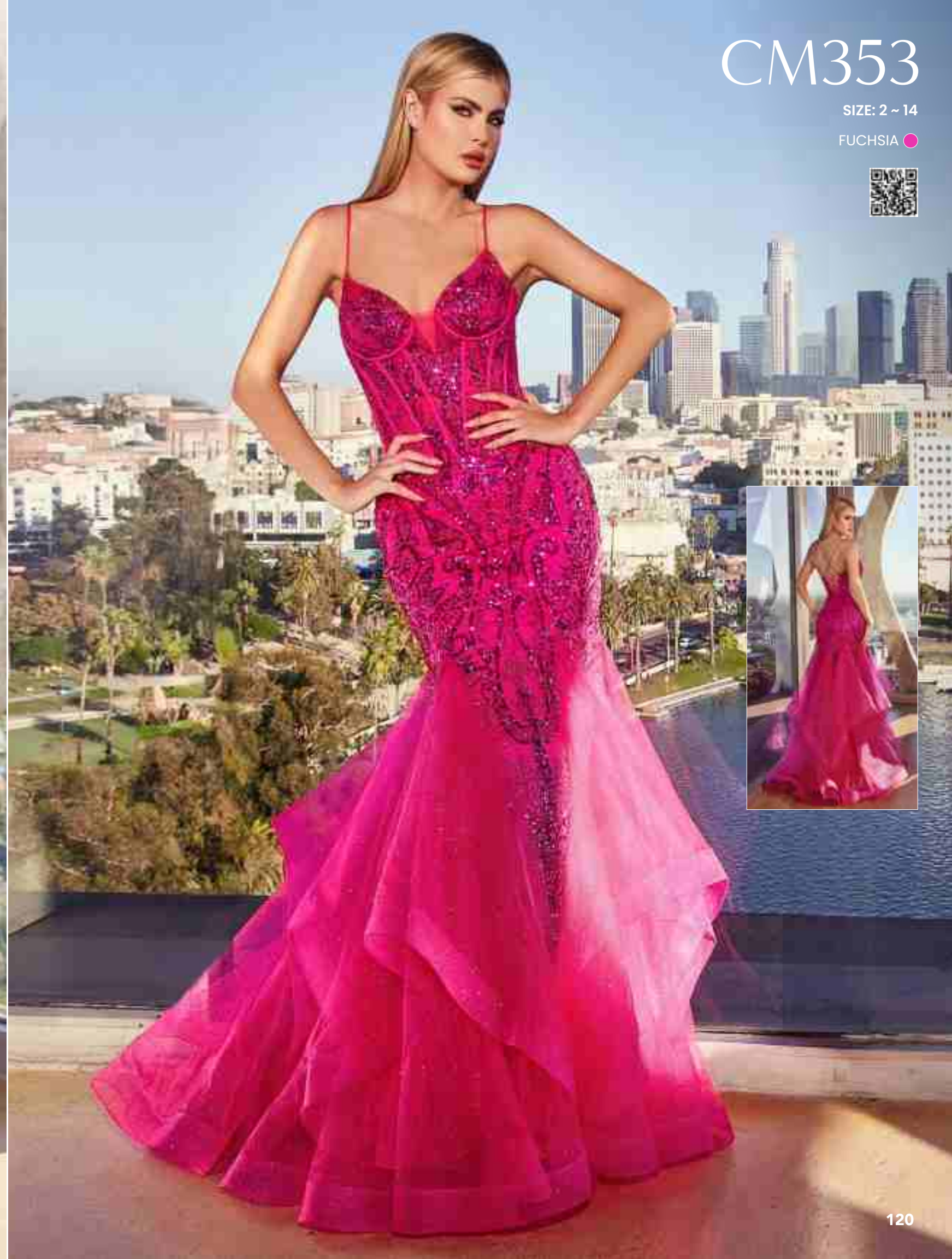
● BLACK



CM353

SIZE: 2 ~ 14

● FUCHSIA



CH062

SIZE: XS ~ 3X

- BLACK
- EMERALD
- ORANGE
- ORCHID
- RED
- SMOKY BLUE



PT004

SIZE: 4 ~ 16

- BLACK
- BURGUNDY
- DUSTY ROSE
- EMERALD
- GOLD
- MAGENTA
- NAVY
- SIENNA ROSE
- SMOKY BLUE



CP639

SIZE: 2 ~ 14

- EMERALD
- PURPLE
- RED
- ROYAL



CM354

SIZE: 2 ~ 18

BLACK ○



ERA *of the* METALLICS



CC6018



CD0186



J871



CH225



B1141



CDS441



CD853

SILVER SIREN

The runway trend is showcasing a shift towards a futuristic yet elegant palette: silver. For boutique owners, this is a signal to embrace a range of silver tones, from muted, matte finishes to high-shine metallics. The trend extends beyond the fabric itself, encouraging experimentation with metallic embellishments, sequins, and accessories to complete the look. While it speaks to a modern aesthetic, it retains a timeless, classic quality. Silver has been the go-to choice for celebrities on the red carpet, and we expect to see a surge of demand for silver by fashion-forward consumers.



CK937



CC2292



CD0216



CC2261



CH051



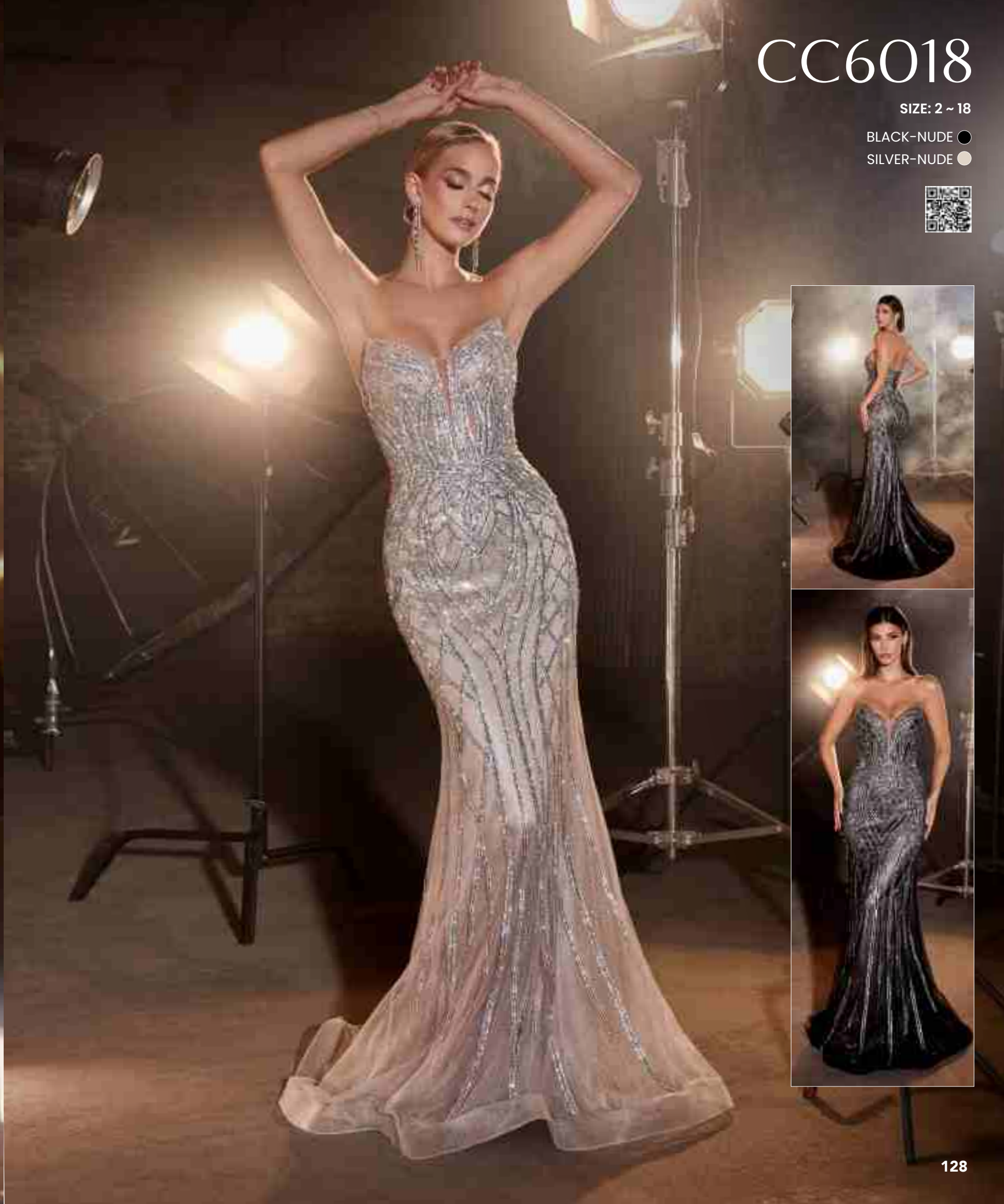
CD0214



C153

GILDED GODDESS

The Gold trend for 2024 is a celebration of the luxurious and radiant aspects of gold in high fashion. This trend creates an all-encompassing experience of opulence and grandeur. explore a realm where fluid gold satin gowns, dresses draped in metallic lamé, and garments adorned with delicate gold embroidery come to life, each piece reflecting light in captivating, mesmerizing ways. This golden trend diverges from the cool, modern aesthetics of silver, in it's rich, deep warmth. It exudes a royal and majestic vibe, making it an ideal choice for clients who seek to add a touch of regal elegance and timeless sophistication.



CC6018

SIZE: 2 ~ 18

BLACK-NUDE

SILVER-NUDE



CD845

SIZE: 2 ~ 18

- BLUE
- ROSE GOLD



CDS450

SIZE: 2 ~ 16

- BLACK
- BLUE
- LAVENDER
- NAVY
- RED
- SILVER



CD0218

SIZE: 2 ~ 16

- BLACK
- EMERALD
- MOCHA
- OLIVE
- ROSE GOLD
- SIENNA
- SILVER-NUDE
- SMOKY BLUE



CC2292

SIZE: 4 ~ 16

- BLACK-GOLD
- EMERALD
- RED
- SILVER-NUDE



CD832

SIZE: 2 ~ 16

- AQUA BLUE
- EMERALD
- GREENERY



CD828

SIZE: 2 ~ 18

● ROSE GOLD



CC2253

SIZE: 2 ~ 14

- DEEP RED ●
- EMERALD ●
- NOVA PURPLE ●
- OCEAN BLUE ●
- SAGE ●
- SILVER-NUDE ●



J871

SIZE: 2 ~ 14

● SILVER

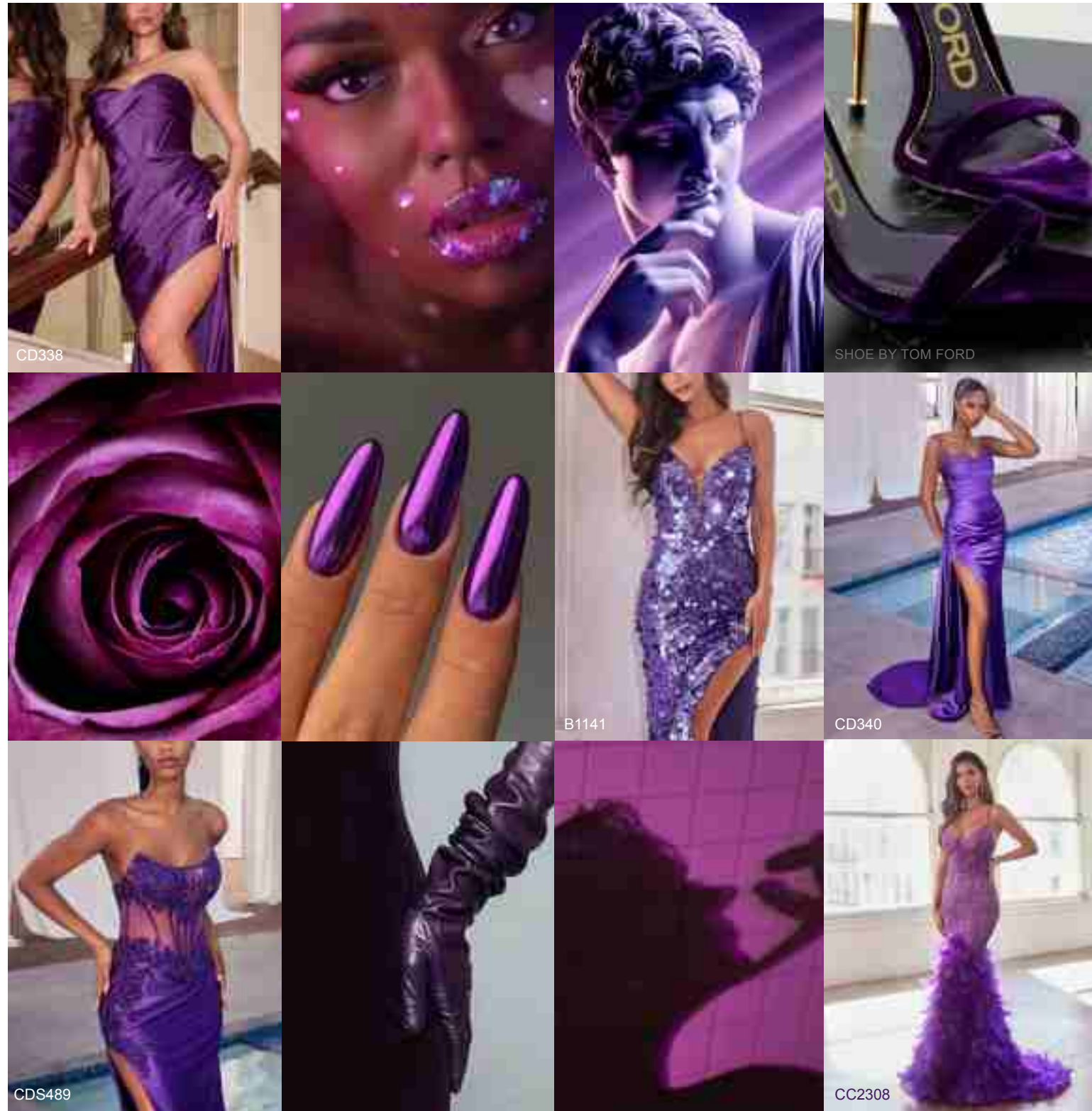


CD0186

SIZE: XS ~ 3X

- BLACK ○
- BLUSH ●
- BURGUNDY ●
- CHAMPAGNE ●
- DUSTY LAVENDER ●
- EMERALD ●
- FUCHSIA ●
- RED ●
- SILVER ●
- SMOKY BLUE ●





PURPLE POP



MESMERIZING NOVA PURPLE IN 2024, THE FASHION WORLD WILL BE CAPTIVATED BY THE STUNNING COLOR PURPLE. FROM THE RUNWAYS OF FASHION SHOWS TO THE INTERIOR DESIGN OF HOMES, PURPLE WILL BE THE TREND THAT DOMINATES ALL OTHER TRENDS. WHETHER IT'S VIBRANT NOVA PURPLE, AN ALLURING ENGLISH VIOLET, A DELICATE LAVENDER, OR A DEEP AND MYSTERIOUS DEEP PLUM, THESE HUES CAN BRING A MYSTERIOUS AND ROMANTIC VIBES TO EVENINGWEAR. THIS MYSTICAL AND ALLURING ULTRAVIOLET AS SEEN IN THE COLLECTIONS OF VERSACE AND TOM FORD IN 2023, IS CONTINUING IN 2024 IN A WIDER RANGE OF PURPLE HUES.



CM340

SIZE: 2 ~ 18

● NAVY



CD327

SIZE: 4 ~ 16

- BLACK ○
- BURGUNDY ●
- EMERALD ●
- FRENCH NAVY ●
- MARIGOLD ●
- NOVA PURPLE ●
- SMOKY BLUE ●



CDS419

SIZE: 2 ~ 18

- BLACK
- BURGUNDY
- DUSTY BLUE
- EMERALD
- FUCHSIA
- LAVENDER
- ROYAL



143

CLO3

SIZE: 4 ~ 18

- BLACK
- BURGUNDY
- EMERALD
- PURPLE
- ROYAL



144



CDS423

SIZE: 2 ~ 14

- BLACK
- DEEP EMERALD
- ROYAL



CD985

SIZE: 4 ~ 10

- BLACK
- EMERALD
- ROSEWOOD



CBO84

SIZE: 2 ~ 14

- BLACK
- ROSE GOLD



CB131

SIZE: 6 ~ 16

- BLACK
- CHAMPAGNE
- EMERALD



CC2998

SIZE: 2 ~ 18

EMERALD





CC2288

SIZE: 2 ~ 16

- BLACK-NUDE
- BLUE
- EMERALD
- FUCHSIA
- GOLD-MIST
- LAVENDER
- MAUVE
- RED
- SAGE
- SILVER-NUDE



DRESS FEATURED: FROM LEFT TO RIGHT
PT004 IN SIENNA ROSE, MAUVE



BRIDESMAID POSSIBLE

ALL SEASON BESTSELLER



CD326, B8422, CD326C

STRATEGIC VERSATILITY

IN THE EVER-CHANGING WORLD OF FASHION RETAIL, THE KEY TO SUCCESS OFTEN LIES IN HAVING MERCHANDISE THAT TRANSCENDS SEASONS. OFFERING VERSATILE GOWNS THAT CAN SERVE AS PROM DRESSES, BRIDESMAID ATTIRE, OR BLACK-TIE ENSEMBLES IS A STRATEGIC MOVE. NOT ONLY DOES THIS APPROACH EXTEND THE FLOOR-LIFE OF YOUR PRODUCTS, BUT IT ALSO INCREASES THE LIKELIHOOD OF THEM BECOMING BEST SELLERS. RETAILERS VALUE ITEMS THAT PROVIDE LONG-TERM VALUE AND VERSATILITY, MAKING IT ESSENTIAL TO CURATE A COLLECTION THAT REMAINS IN DEMAND YEAR-ROUND.



CH079, CH079C



7497, 7496



7494, 7488

7492, 7483



CD337, 7495

7493

DRESS FEATURED:
FROM LEFT TO RIGHT 7483, 7492

7492

SIZE: 2 ~ 16

- BLACK ○
- BURGUNDY ●
- EMERALD ●
- FRENCH NAVY ●
- LAVENDER ●
- MAUVE ●
- MAUVE ROSE ●
- SMOKY BLUE ●
- SAGE ●
- SIENNA ●
- OLIVE ●



“Who’s
that girl”
GOSSIP GIRL STATUS



CD943

SIZE: 4 ~ 16

- BLACK
- BURGUNDY
- CYAN
- DESERT ROSE
- DUSTY BLUE
- EMERALD
- FUCHSIA
- LILAC
- MAUVE
- RED
- ROYAL
- YELLOW





BD104

SIZE: XS ~ 2X

- BLACK ●
- BURGUNDY ●
- DESERT ROSE ●
- DUSTY BLUE ●
- DUSTY ROSE ●
- EMERALD ●
- FRENCH NAVY ●
- HOT PINK ●
- LAVENDER ●
- LIPSTICK ●
- MAUVE ●
- NAVY ●
- ROYAL ●
- SAGE ●
- SAND ●
- SIENNA ●
- GREENERY ●
- RED ●





- BLACK ○
- BURGUNDY ●
- DUSTY BLUE ●
- EMERALD ●
- FUCHSIA ●
- GOLD ●
- NAVY ●

SIZE: XS ~ XL

CH079



7496

SIZE: 4 ~ 16

- BLACK
- BURGUNDY
- HUNTER GREEN
- MAUVE
- MAUVE ROSE
- NAVY
- SAGE
- SIENNA
- ROSE GOLD



7497

SIZE: 4 ~ 16

- BLACK
- BURGUNDY
- HUNTER GREEN
- MAUVE
- MAUVE ROSE
- NAVY
- SAGE
- SIENNA



B8401

SIZE: XS ~ XL

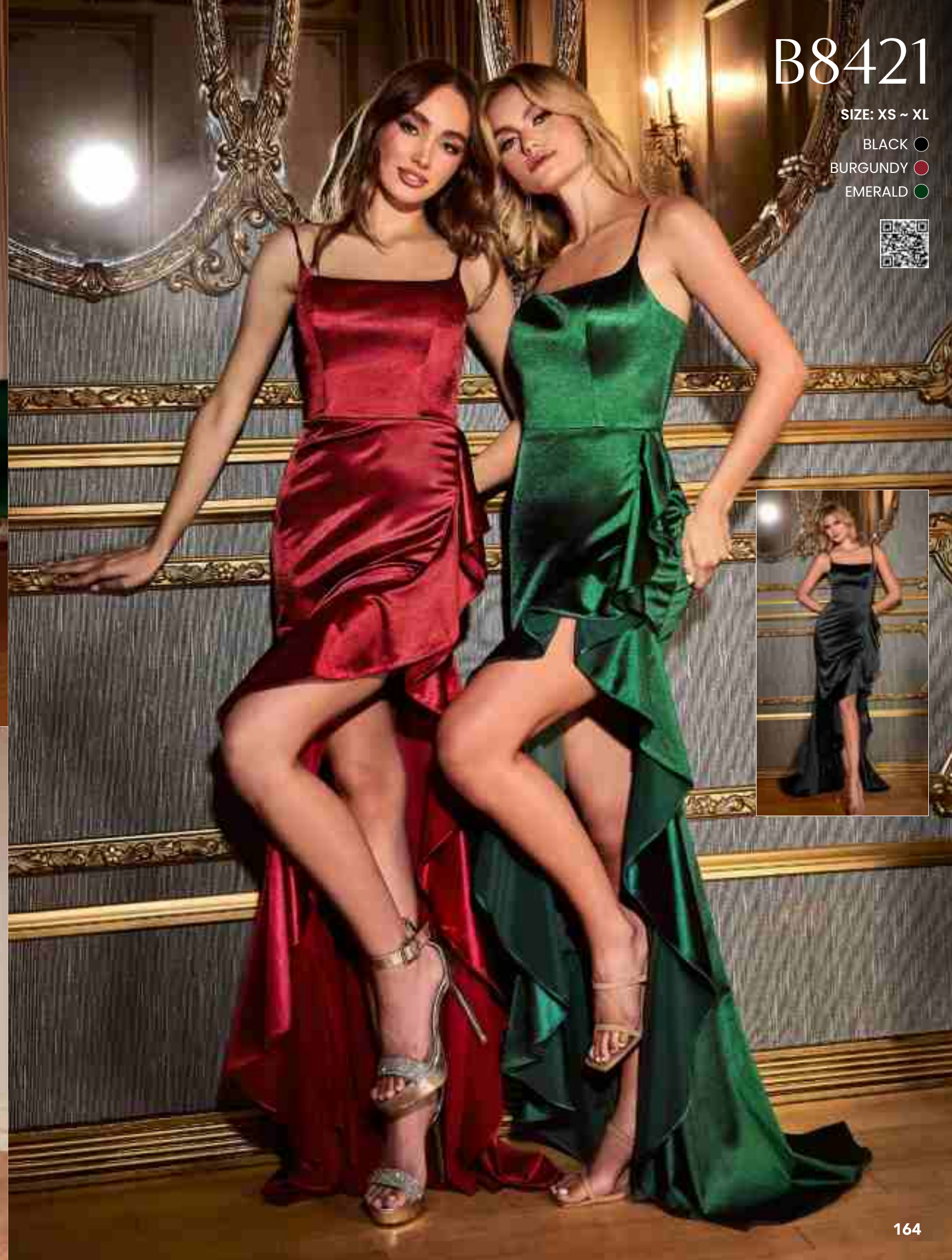
- BLACK
- BURGUNDY
- EMERALD
- ROYAL

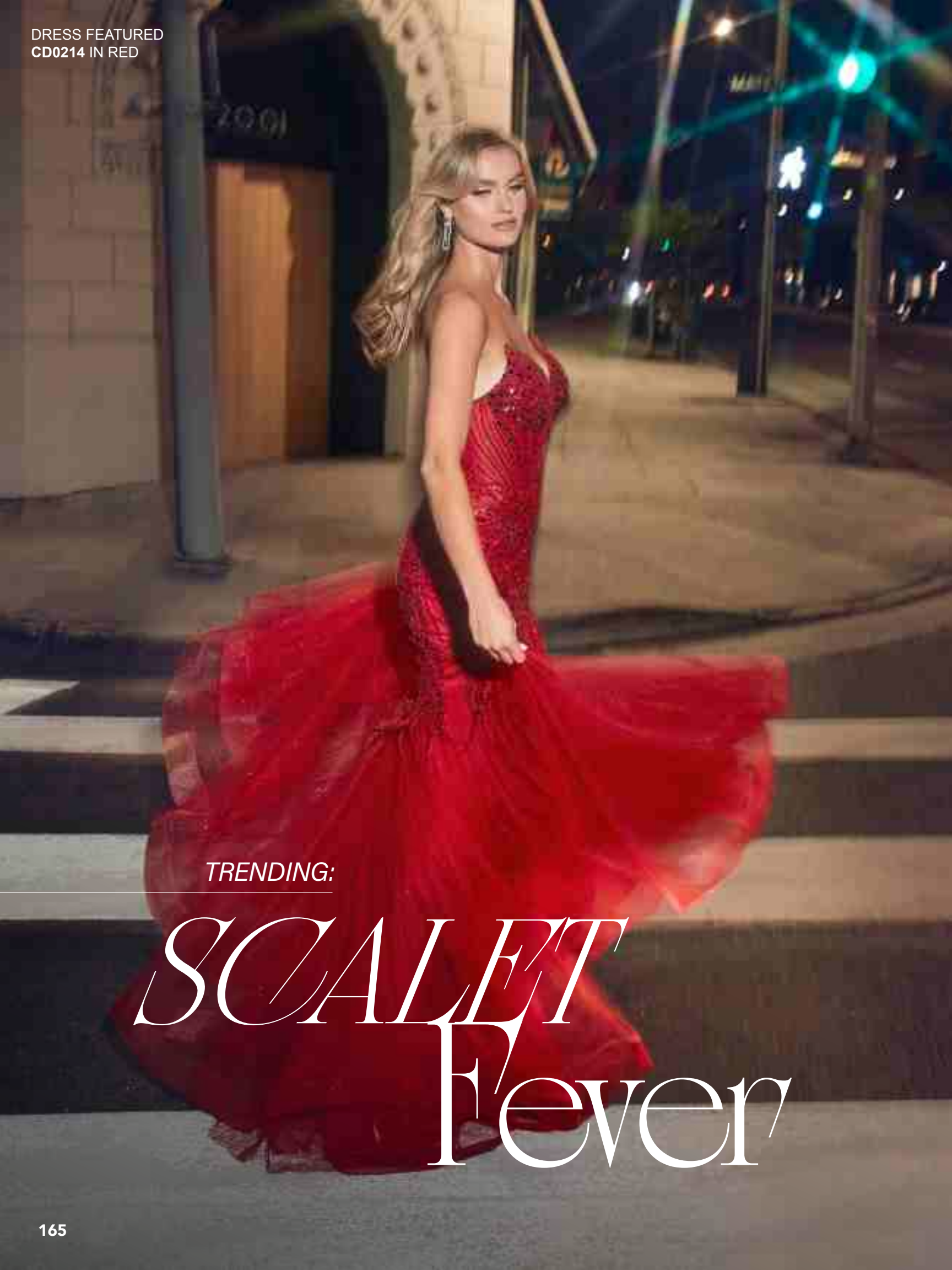


B8421

SIZE: XS ~ XL

- BLACK
- BURGUNDY
- EMERALD





TRENDING:

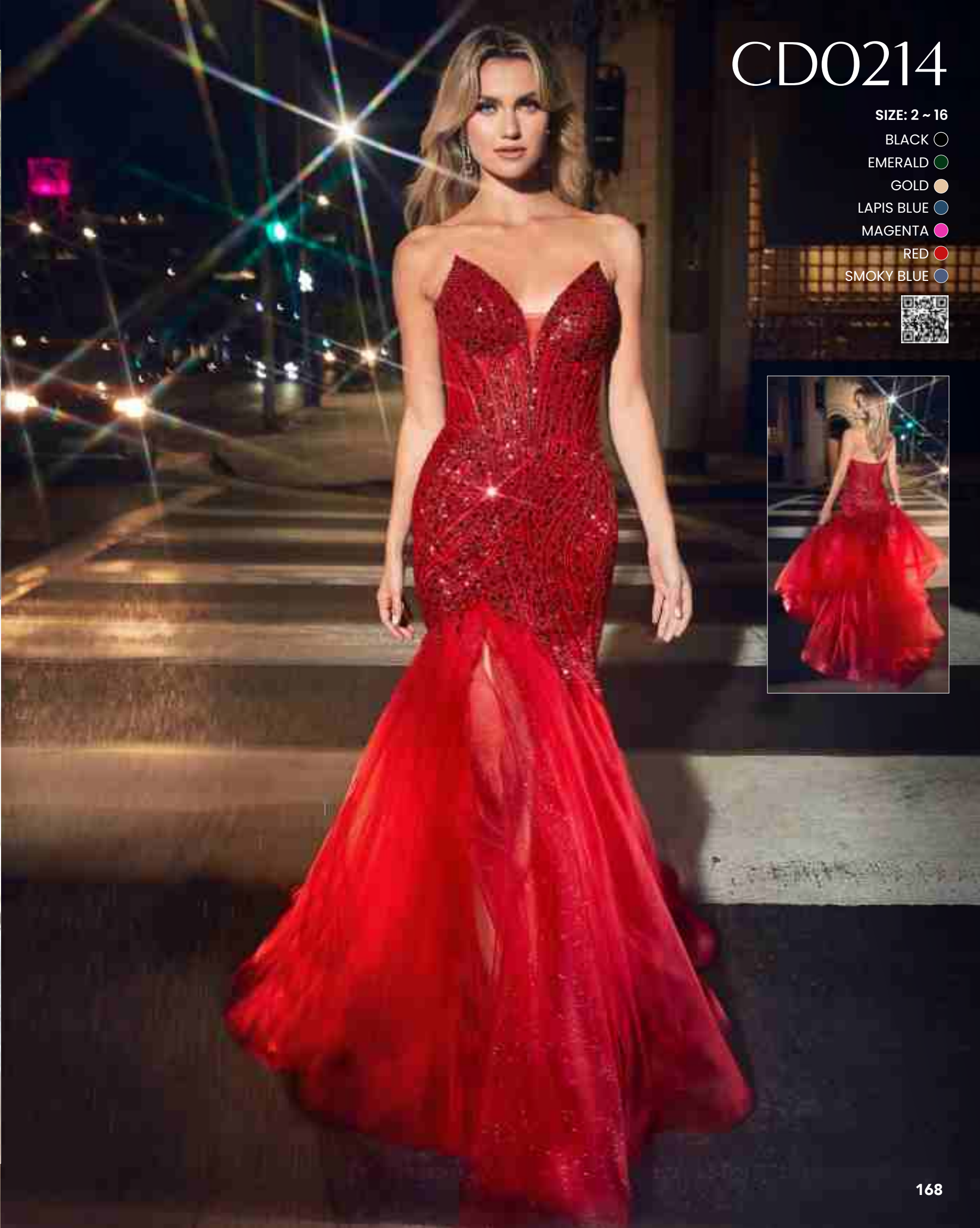
SCARLET Fever



SEEING RED



RED CARPET READY IN FW2023 AND SS2023, MAJOR FASHION RUNWAYS LIKE PARIS, MILAN, AND NEW YORK PROMINENTLY FEATURED THE RED TREND, SHOWCASING ITS VERSATILITY AND WIDE APPEAL. DESIGNERS EMBRACED SHADES RANGING FROM DEEP BURGUNDIES TO BRIGHT SCARLETS, INTEGRATING THEM INTO EVERYTHING FROM STATEMENT GOWNS TO SUBTLE ACCENTS. BOUTIQUE OWNERS SHOULD CONSIDER THIS TREND FOR CLIENTS LOOKING TO CAPTURE THE BOLD SPIRIT OF THESE INFLUENTIAL RUNWAY SHOWS.



CD0214

SIZE: 2 ~ 16

- BLACK ○
- EMERALD ●
- GOLD ●
- LAPIS BLUE ●
- MAGENTA ●
- RED ●
- SMOKY BLUE ●



CB129

SIZE: 6 ~ 16

- SAGE
- SMOKY BLUE



CDS440

SIZE: 2 ~ 16

- BLACK
- DUSTY BLUE
- EMERALD
- MIDNIGHT
- ROYAL
- SAND



CH077

SIZE: XS ~ XL

- BLACK
- EMERALD
- LAPIS BLUE
- PLATINUM
- RED
- WINE



CC2167

SIZE: 2 ~ 12

- BURGUNDY
- LT BLUE
- SILVER-NUDE



F2303

SIZE: 6 ~ 18

● NAVY



CD848

SIZE: 2 ~ 18

● PLATINUM



CD836

SIZE: 2 ~ 16

- BLACK
- DEEP RED
- PEACOCK



CD820

SIZE: 2 ~ 14

- EMERALD
- RED
- ROYAL
- SILVER



DRESS FEATURED:
CC2346 IN BLACK



HEIRESS CORE

TAKE IT FROM PARIS

CZ0026

SIZE: 2 ~ 14

BLUE ●



CC2358

SIZE: 2 ~ 16

- BLACK-NUDE
- SILVER-NUDE



9312

SIZE: 2 ~ 16

- BLACK
- CHAMPAGNE



CR875

SIZE: 2 ~ 14

● BLACK



CD0231

SIZE: 4 ~ 16

- BLACK
- DARK MAUVE
- EMERALD
- RED
- SMOKY BLUE



CD326

SIZE: 4 ~ 16

- BLACK
- LIPS
- RED
- SAGE
- SOFT NAVY



CDS417

SIZE: 2 ~ 16

- BLACK
- BURGUNDY
- CHAMPAGNE
- DUSTY BLUE
- EMERALD



Y034

SIZE: 2 ~ 14

- IRIDESCENT BLUE
- IRIDESCENT BLUSH



CM343

SIZE: 2 ~ 14

- MARIGOLD



CR874

SIZE: 2 ~ 14

- BLUE
- EMERALD



CZ0027

SIZE: 2 ~ 14

- AZALEA PINK
- BLACK
- EMERALD
- ORCHID





BARBIE FOREVER

50 SHADES OF PINK



PRETTY PINK



PINK EMERGES AS A STANDOUT PHENOMENON FROM THE UNFORGETTABLE BARBIECORE MOVEMENT. DESIGNERS ARE PAINTING THE RUNWAY IN EVERY CONCEIVABLE SHADE OF PINK. THIS TREND IS A CELEBRATION OF FEMININITY AND PLAYFULNESS, SHOWCASING AN ARRAY OF HUES FROM THE SOFTEST PALE BLUSH TO THE MOST VIBRANT MAGENTA. LEADING FASHION BRANDS, INCLUDING VALENTINO, HAVE LAUNCHED PINK-CENTRIC COLLECTIONS, AND CELEBRITIES LIKE MEGHAN FOX, ANNE HATHAWAY, AND KIM KARDASHIAN ARE EMBRACING THIS TREND WITH PINK ENSEMBLES.

CD3936

SIZE: 2 ~ 14

- GOLD
- OPAL BLUSH



CM351

SIZE: 2 ~ 12

- BLUE



CM356

SIZE: 2 ~ 10

PINK



CB146

SIZE: 2 ~ 12

FUCHSIA

ORANGE



CC2279

SIZE: 2 ~ 12

- BLUE
- CORAL
- LAVENDER
- ORANGE



CD996

SIZE: 2 ~ 20

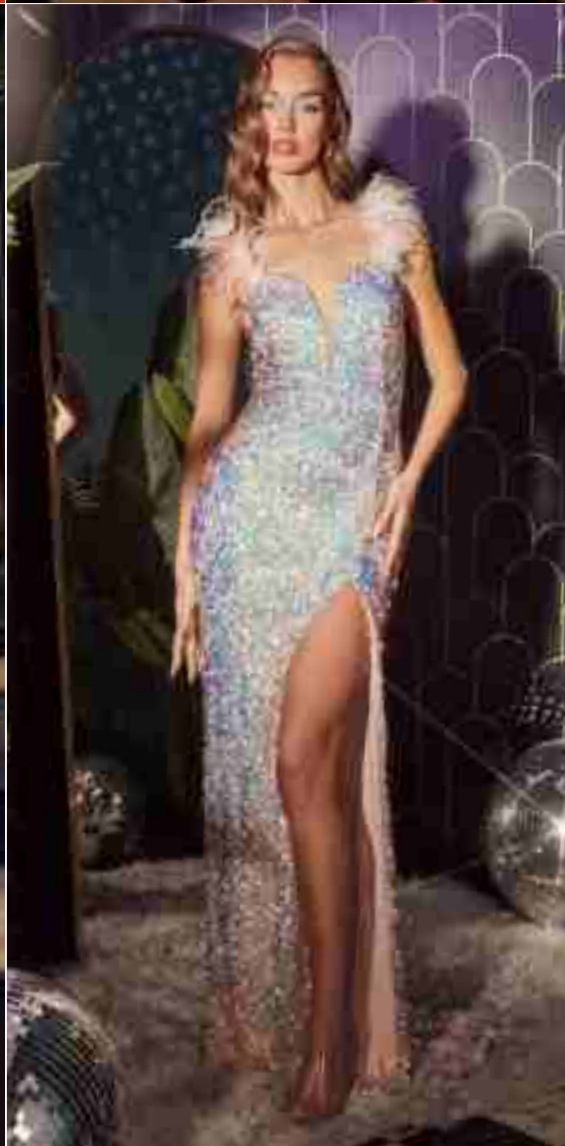
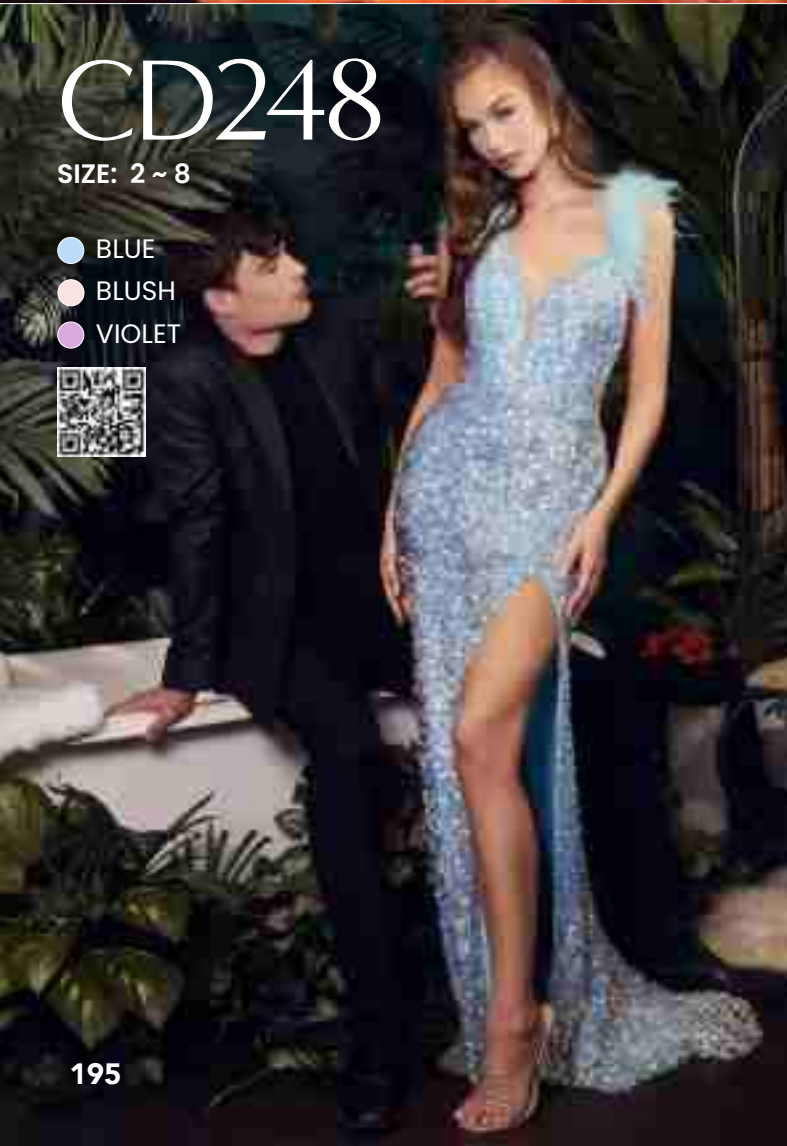
- BLACK
- EMERALD
- FUCHSIA
- RED
- ROYAL
- SILVER



CD248

SIZE: 2 ~ 8

- BLUE
- BLUSH
- VIOLET



CD231

SIZE: 4 ~ 20

- BLACK
- BURGUNDY
- GREENERY
- LAVENDER
- PARIS BLUE
- PEARL BLUSH
- ROSEWOOD
- ROYAL
- SIENNA



CD282

SIZE: 2 ~ 16

- BLACK
- BURGUNDY
- EMERALD



KV1063

SIZE: 2 ~ 14

- BLACK
- BLUE
- NEON FUCHSIA
- RED
- ROYAL



CD254

SIZE: 2 ~ 16

- BLACK
- CHAMPAGNE GOLD
- EMERALD
- FUCHSIA
- LAVENDER
- NAVY
- RED
- ROSEWOOD
- ROYAL
- SEA MIST
- SILVER
- SMOKY BLUE



CD0154

SIZE: XXS ~ 4X

- BLACK
- BLUSH
- EMERALD
- ENGLISH VIOLET
- NAVY
- SMOKY BLUE



CD990

SIZE: 2 ~ 18

- BLACK
- BLUE
- ROSE GOLD
- SILVER-NUDE



- BLACK
- BLUE
- ROSE GOLD
- SILVER

SIZE: 4 ~ 18

CD994

CC2162

SIZE: 4 ~ 16

- BLACK
- EMERALD
- POWDER BLUE
- RED
- ROYAL



CD884

SIZE: 2 ~ 18

- BLACK
- EMERALD
- MIDNIGHT GREY
- OPAL
- RED
- ROSEWOOD
- ROYAL



CBO95

SIZE: 2 ~ 16

- EMERALD
- FUCHSIA
- LAVENDER
- SMOKY BLUE



CBO80

SIZE: 2 ~ 18

- BLACK
- BLUSH
- EMERALD
- MAUVE
- SAGE
- SMOKY BLUE



CASCADING TIERS

OF RUFFLES ONE OF THE MOST PROMINANT TRENDS FROM THE RECENT SHOW WAS THE RUFFLE TREND, MULTIPLE TIERS OF CASCADING RUFFLES, EVOKING A SENSE OF PLAYFUL FEMININITY AND CHARM. FROM VOLUMINOUS RUFFLED DRESSES THAT MAKE A DRAMATIC ENTRANCE TO DELICATELY TIERED BLOUSES THAT CAPTURE THE ESSENCE OF SOFT ELEGANCE, THE "RUFFLE" TREND OFFERS A VERSATILE RANGE OF OPTIONS FOR EMBRACING ITS ROMANTIC AESTHETIC. WHETHER RENDERED IN SOFT PASTELS FOR A DREAMY LOOK OR BOLD, VIBRANT HUES FOR A STATEMENT-MAKING ENSEMBLE, RUFFLES ARE THE EPITOME OF ROMANCE.



DRESS FEATURED:
KV1095 IN DUSTY ROSE



C152

KV1110

TRENDING:

RUFFLE ROMANCE

CC5299

KV1095

9316

CDS491

SIZE: 2 ~ 14

- BLUE
- GOLD



KV1110

SIZE: 2 ~ 14

- BLUE
- LAVENDER
- PINK



KV1108

SIZE: 2 ~ 18

- BLACK
- BLUE
- SAGE



CDS490

SIZE: 2 ~ 14

- LT BLUE



C152

SIZE: 2 ~ 16

- AZALEA PINK
- DEEP BLUE



213

CD865

SIZE: 6 ~ 20

PLATINUM ●



214

CB144

SIZE: 4 ~ 16

● MAUVE

● SAGE



CB147

SIZE: 6 ~ 20

● ROSE CHAMPAGNE



CD0234

SIZE: 2 ~ 18

- EMERALD
- ENGLISH VIOLET
- MOCHA GOLD
- RED
- SMOKY BLUE



CDS497

SIZE: 2 ~ 14

- BLACK
- EMERALD
- GOLD



CH048

SIZE: XXS ~ 2X

- BLACK ●
- DEEP RED ●
- EGGPLANT ●
- EMERALD ●
- GOLD ●
- MARIGOLD ●
- ORCHID ●
- SMOKY BLUE ●



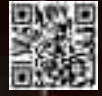
REDEFINE THE CLASSIC

MODERN
BOURGEOIS

CB148

SIZE: 2 ~ 14

● BLUE



CD005

SIZE: 2 ~ 14

MIST ●



SFO09

SIZE: 6 ~ 20

- BURGUNDY
- EMERALD
- FOG GREY



CD0232

SIZE: 2 ~ 16

- BLACK
- GREENERY
- MOCHA GOLD
- SILVER-NUDE
- SMOKY BLUE



CH051

SIZE: XS ~ XL

- EMERALD
- GOLD
- MAGENTA
- ROSEWOOD



CD806

SIZE: 2 ~ 14

BLACK



CD258

SIZE: 2 ~ 14

- GOLD
- LAVENDER
- OCEAN BLUE
- RED
- SILVER



CD229

SIZE: 2 ~ 16

- BLACK
- EMERALD



CDS496

SIZE: 2 ~ 16

- BLACK
- DUSTY BLUE
- EMERALD
- NAVY
- RED
- BURGUNDY



CDS449

SIZE: 2 ~ 14

- RED
- ROYAL



CD352

SIZE: 2 ~ 14

● TEAL



Y036

SIZE: 2 ~ 14

● EMERALD

● RED

● ROYAL



2 Piece Versatility

TRENDING:

CO-ORD SETS, ALSO KNOWN AS COORDINATED OR MATCHING SETS, ARE CELEBRATED FOR THEIR VERSATILITY, ALLOWING WEARERS TO EFFORTLESSLY ADAPT TO VARIOUS OCCASIONS. THIS TREND CAN BE SEEN IN 2-PIECE GOWNS, THAT CAN BE TRANSFORMED BY REMOVING THE SEPARATE PIECE TO TRANSFORM FROM FORMAL TO CASUAL. THIS VERSATILITY ALSO EXTENDS TO THE ABILITY TO MIX AND MATCH THESE PIECES.



J858 SET GOWN
MERMAID GOWN
CORSET WITH OVERSKIRT



CD310 SET GOWN
GOWN WITH SATIN SKIRT
CORSET BODICE WITH TIE-CLOSURE



CB146 SET GOWN
MINI DRESS
FRONT CLOSURE OVERSKIRT



CDS493 SET GOWN
CROP TOP
MERMAID SKIRT

J858

SIZE: 2 ~ 16

- BLACK
- DUSTY MAUVE
- EMERALD
- FRENCH PLUM
- LAPIS BLUE
- ROSE GOLD
- SAGE
- SMOKY BLUE



2 PIECE GOWN WITH SEPARATE CORSET OVERSKIRT



CDS493

SIZE: 2 ~ 10

- BLACK
- DUSTY BLUE
- EMERALD
- HOT PINK
- RED
- ROYAL



CD350

SIZE: 2 ~ 10

- LT BLUE
- PINK
- ROSE CHAMPAGNE
- ROYAL



CB104

SIZE: 2 ~ 14

- LAVENDER
- MAUVE
- SMOKY BLUE



J845

SIZE: 2 ~ 16

AMETHYST



CD208

SIZE: 2 ~ 22

GOLD-SILVER



CC5299

SIZE: 2 ~ 16

● GOLD-MIST



CD833

SIZE: 2 ~ 14

● ROSE GOLD



CDS441

SIZE: 2 ~ 20

- BURGUNDY
- COPPER
- DUSTY BLUE
- GRAPHITE SILVER
- NAVY
- RED
- ROSE PINK

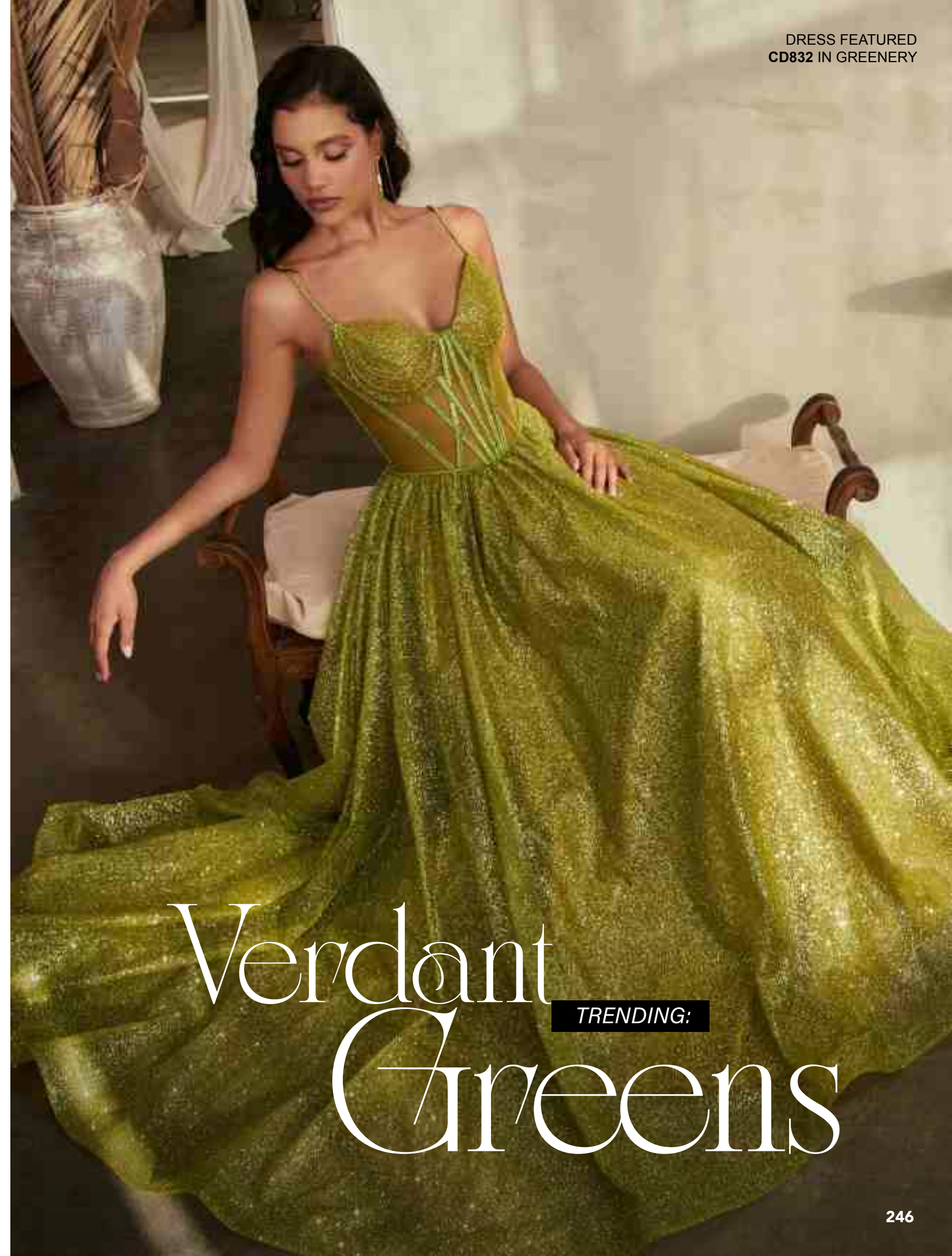




GREENERY



FEELING FRESH FOR SPRING THE 'GREENERY' TREND IS BLOSSOMING IN THE EVENINGWEAR AND WEDDING SCENES, WITH A FRESH SPECTRUM OF GREENS FROM SAGE TO OLIVE TAKING CENTER STAGE. ESTEEMED DESIGNERS LIKE ERDEM AND BRANDON MAXWELL HAVE SHOWCASED THESE NATURE-INSPIRED HUES, HIGHLIGHTING THEIR VERSATILITY AND FLATTERING APPEAL ON A WIDE RANGE OF SKIN TONES. THIS TREND INVITES BOUTIQUE OWNERS TO REFRESH THEIR COLLECTIONS WITH THESE SERENE GREEN SHADES, PARTICIPATING IN THE GREEN TREND HAPPENING IN EVENING AND WEDDING SCENE.



Verdant TRENDING: Greens

7488

SIZE: 4 ~ 16

- BLACK
- BURGUNDY
- EMERALD
- FRENCH NAVY
- MAHOGANY
- MAUVE ROSE
- SAGE
- SIENNA
- SMOKY BLUE



247



7493

SIZE: 2 ~ 16

- BLACK
- BURGUNDY
- EMERALD
- FRENCH NAVY
- LAVENDER
- MAUVE ROSE
- SAGE



248

CD809

SIZE: 2 ~ 16

DUSTY ROSE

GREENERY



CB145

SIZE: 4 ~ 16

GREENERY



CD0176

SIZE: XXS ~ 2X

- BURGUNDY
- CHAMPAGNE GOLD
- GREENERY
- NAVY
- PURPLE
- ROBIN BLUE
- ROSE
- BLACK



7484

SIZE: 2 ~ 16

- BLACK
- BLUE
- DUSTY ROSE
- EMERALD
- LILAC
- LIPS
- OLIVE
- RED
- ROSEWOOD
- SAGE
- SOFT NAVY





C148

SIZE: 4 ~ 16

BLUE 

DUSTY MAUVE 

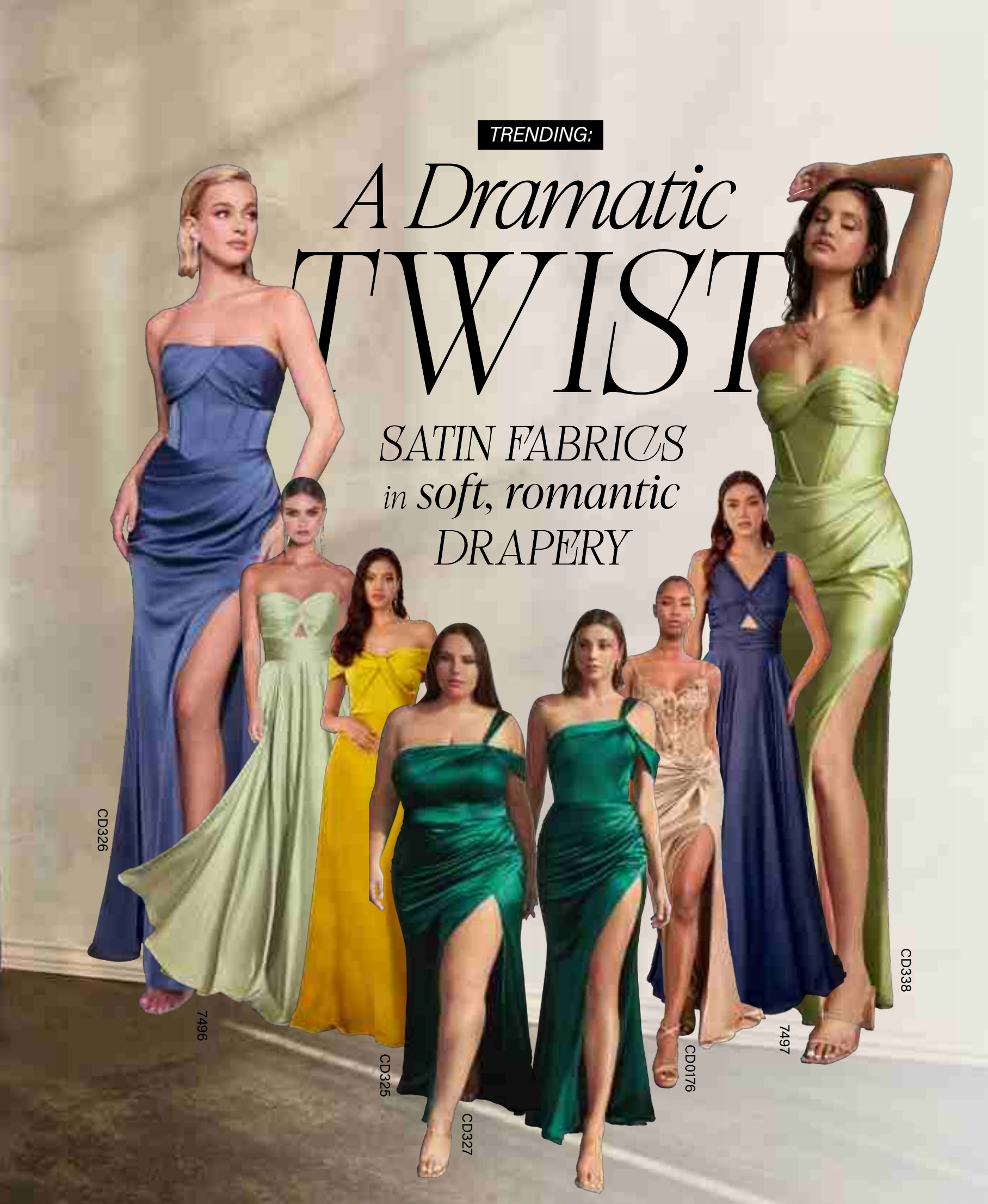
DUSTY TEAL 



TRENDING:

A Dramatic TWIST

SATIN FABRICS
in soft, romantic
DRAPERY



B8422

SIZE: S ~ 3X

- BLACK
- BURGUNDY
- DARK SILVER
- EMERALD
- LAPIS BLUE
- LAVENDER
- OLIVE
- PLATINUM
- ROSE GOLD



CD338

SIZE: 2 ~ 18

- BLACK
- DUSTY ROSE
- EMERALD
- EGGPLANT
- GREENERY
- PARIS BLUE
- RED



CD0227

SIZE: 2 ~ 16

- AMETHYST
- BLACK
- DEEP BLUE
- EMERALD
- GREENERY
- MOCHA GOLD
- ORANGE
- RED
- SMOKY BLUE



7495 

SIZE: 2 ~ 16

- BLACK
- BURGUNDY
- EMERALD
- LT CORAL
- PURPLE
- RED
- SIENNA
- SMOKY BLUE
- SOFT NAVY



 CD337

SIZE: 2 ~ 16

- BLACK
- EMERALD
- MAUVE
- NAVY
- RED
- SAGE
- SIENNA
- SMOKY BLUE



CB143

SIZE: 2 ~ 16

● BURGUNDY



C157

SIZE: 2 ~ 16

● DUSTY ROSE

● PURPLE



C145

SIZE: 2 ~ 18

● EMERALD



B8402

SIZE: XS ~ 2X

- BLACK
- BLUSH
- BURGUNDY
- EMERALD
- FRENCH NAVY
- LT BLUE
- PURPLE
- ROYAL
- SIENNA



CD962

SIZE: 2 ~ 20

- MAUVE
- SMOKY BLUE



CD0175

SIZE: S ~ 4X

- MOCHA GOLD
- ROSE GOLD
- SMOKY BLUE



CD955

SIZE: 4 ~ 20

- NAVY-GOLD
- ROSE GOLD
- SMOKY BLUE



TRENDING:

SHADES OF SIENNA

PINTEREST HAS REPORTED ON THE RISE IN THE SEARCHES FOR TERRACOTTA, COPPER, BURNT ORANGE, SIENNA, AND RUST FROM THE SEARCHES ASSOCIATED TO WEDDING IN 2023.

- BURNT ORANGE WEDDING THEME +695%
- TERRACOTTA WEDDING BRIDESMAID DRESSES +230%
- ORANGE WEDDING CENTERPIECES +150%
- COPPER SAREE +285%
- ORANGE DRESS OUTFIT WEDDING +285%

CD912, CD0168, CD979 IN SIENNA



NIKAU FLORA

CD337, 7495



7482 IN SUNSET RUST, SIENNA



7496C, C157, 7497



PT004 IN SIENNA ROSE, MAUVE



RUST & LOVE

DRESS FEATURED
CDS488 IN SIENNA

7483

SIZE: 2 ~ 18

- BLACK
- BLOSSOM PINK
- BURGUNDY
- CHAMPAGNE
- EMERALD
- FRENCH NAVY
- LAVENDER
- LT BLUE
- MAGENTA
- MARIGOLD
- MAUVE
- MAUVE ROSE
- OLIVE
- ORANGE
- RED
- SAGE
- SIENNA
- SMOKY BLUE



CD290

SIZE: 4 ~ 20

- BLACK
- EMERALD
- RED
- ROSE GOLD



BD4003

SIZE: S ~ 2X

- BLACK
- BURGUNDY
- EMERALD
- MIDNIGHT GREY
- ROYAL



CD260

SIZE: 4 ~ 18

- EMERALD
- MIDNIGHT GREY
- RED
- ROSE GOLD



CD252

SIZE: 2 ~ 16

- BLACK
- CHAMPAGNE GOLD
- EMERALD
- FUCHSIA
- LAVENDER
- PINK
- RED
- ROYAL
- SMOKY BLUE



CB127

SIZE: 6 ~ 18

● BLACK



CD867

SIZE: 2 ~ 20

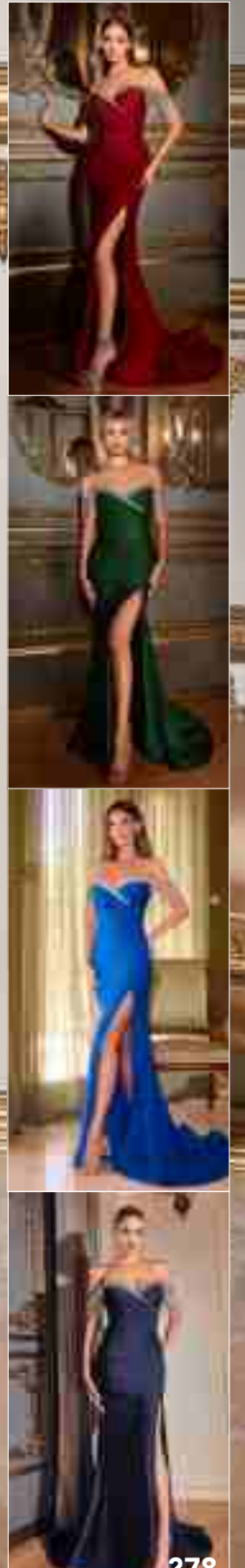
● BLACK

● BURGUNDY

● EMERALD

● NAVY

● ROYAL



CD0203

SIZE: XS ~ 4X

- BLACK
- BLUSH
- BURGUNDY
- CHAMPAGNE
- EMERALD
- ENGLISH VIOLET
- MOCHA GOLD
- OLIVE
- ORCHID
- SIENNA
- SILVER-NUDE
- SMOKY BLUE



CC4006

SIZE: 4 ~ 16

- BLACK
- ROYAL



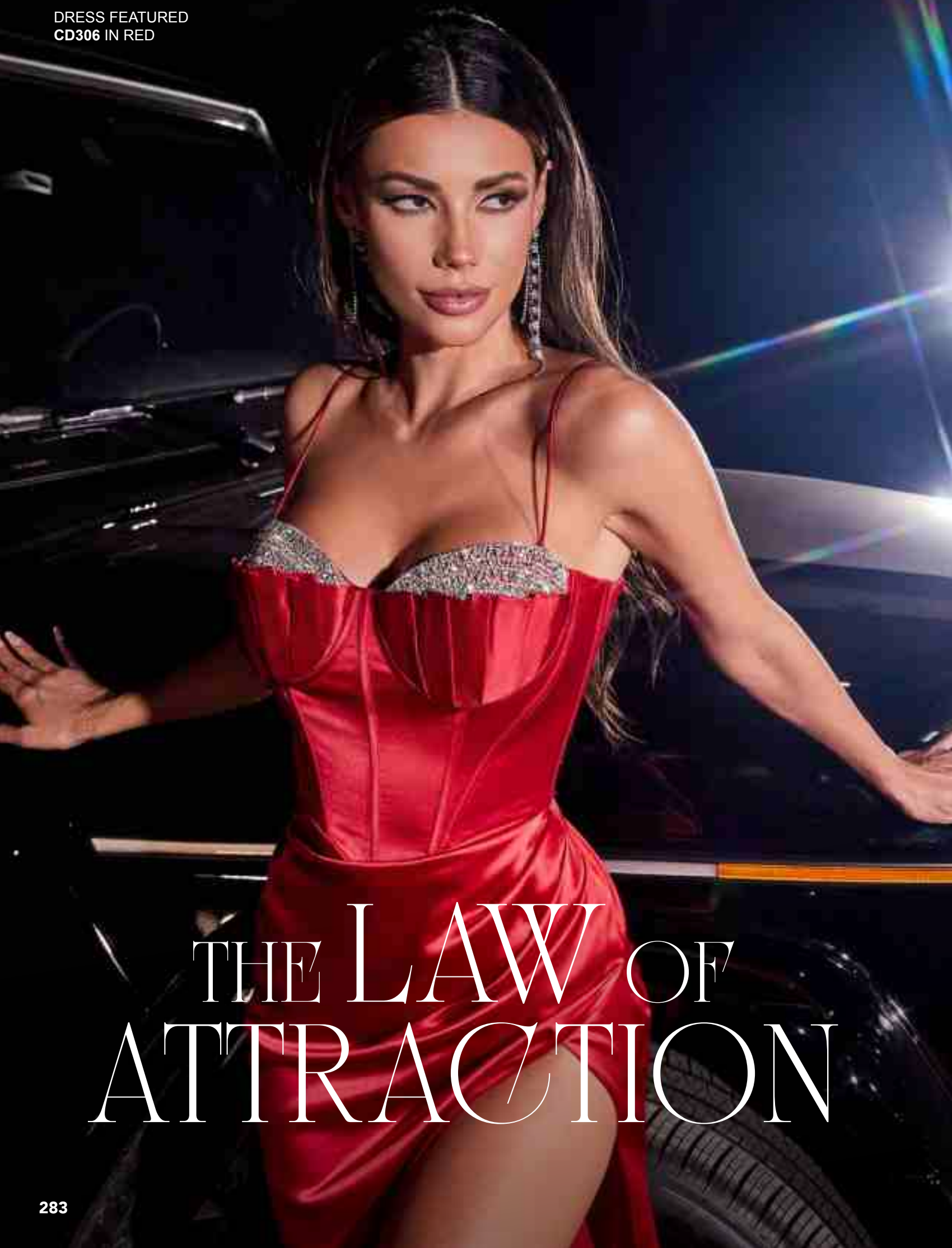
KV1050

SIZE: 2 ~ 24

- BLACK
- BURGUNDY
- EGGPLANT
- EMERALD
- MAUVE
- NAVY
- RED
- ROYAL



DRESS FEATURED
CD306 IN RED



THE LAW OF ATTRACTION

CD265

SIZE: 2 ~ 14

- BLACK ●
- EMERALD ●
- FUCHSIA ●
- LAVENDER ●
- NEON GREEN ●
- NEON PINK ●
- RED ●
- ROYAL ●
- YELLOW ●



CD285

SIZE: 2 ~ 14

- BLACK
- RED
- ROYAL



CD2215

SIZE: 2 ~ 16

- BLACK
- LAVENDER
- ROYAL



HT168

SIZE: 2 ~ 12

- BLACK
- BURGUNDY



CD886

SIZE: 2 ~ 20

- BLACK
- DUSTY BLUE
- EMERALD
- FUCHSIA
- HOT CORAL
- LAVENDER
- OCEAN BLUE
- RED
- ROYAL
- YELLOW



SIZE: 4 ~ 20

- BLUSH
- CHAMPAGNE
- EUCALYPTUS
- MAUVE

CJ523



SIZE: 4 ~ 16

- BLACK
- BURGUNDY
- EMERALD
- GOLD

CM318

CBO46

SIZE: 2 ~ 16

- DEEP RED
- EMERALD
- ROSE GOLD
- SMOKY BLUE



CD269

SIZE: 2 ~ 12

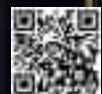
- BLACK
- EMERALD
- MAGENTA
- MARIGOLD
- RED



CD275

SIZE: 2 ~ 16

- BLACK
- EMERALD
- FUCHSIA
- ROYAL



CH225

SIZE: XXS ~ 2X

- BLACK
- BLUE-SILVER
- EMERALD
- FUCHSIA
- GOLD
- LAPIS BLUE
- LAVENDER
- MAHOGANY
- OCEAN BLUE
- PLATINUM
- RED
- ROSE GOLD
- ROYAL
- SIENNA
- YELLOW



CH151

SIZE: XS ~ 4X

- BLACK
- EMERALD
- FUCHSIA
- OCEAN BLUE
- RED
- ROYAL



CB119

SIZE: 4 ~ 14

- BLACK
- RED
- ROYAL



- COBALT
- ROSE GOLD
- SMOKY BLUE

SIZE: 2 ~ 16

CDS421

CD279

SIZE: 6 ~ 20

- BLACK
- BURGUNDY
- EMERALD
- ROSE GOLD
- ROYAL



CC2212

SIZE: 6 ~ 24

- BLACK
- EMERALD
- LAPIS BLUE
- RED
- ROYAL



BD4004

SIZE: XS ~ XL

- BLACK
- CHAMPAGNE
- DUSTY LAVENDER
- EMERALD
- RED
- ROSE GOLD



7489

SIZE: 4 ~ 16

- EMERALD
- NUDE
- ROSE GOLD
- SMOKY BLUE



CD912

SIZE: 4 ~ 20

- BLACK
- BURGUNDY
- DEEP MAUVE
- EMERALD
- NAVY
- OLIVE
- SMOKY BLUE



BD7045

SIZE: XS ~ L

- BLACK
- BURGUNDY
- PARIS BLUE
- ROSE GOLD



DRESS FEATURED
CC7621 IN BLACK

NOIR LUXE

BLACK TIE DRESSING ON THE 12TH HOUR



BLACK IS MAKING A POWERFUL COMEBACK IN FASHION. DESIGNERS ARE INNOVATING WITH THIS CLASSIC COLOR, CREATING VERSATILE PIECES THAT RANGE FROM SHARP, TAILORED SUITS TO FLOWING, DRAMATIC DRESSES. THIS RENEWED FASCINATION WITH BLACK, OBSERVED ON RUNWAYS, REAFFIRMS BLACK'S UNPARALLELED ABILITY TO OFFER BOTH SIMPLICITY AND DRAMA, MAKING IT A QUINTESSENTIAL ELEMENT FOR FASHION MERCHANDISING.



CH061

SIZE: XS ~ 3X

- BLACK
- LAVENDER



CD310

SIZE: 2 ~ 16

- BLACK



2-PIECE GOWN WITH SEPARATE CORSET



CC7621

SIZE: 2 ~ 18

● BLACK



CD0219

SIZE: 4 ~ 16

BLACK-NUDE ●

EMERALD ●

SMOKY BLUE ●

BLACK ●



CDS439

SIZE: 2 ~ 16

- AMETHYST
- DEEP RED
- DUSTY BLUE
- EMERALD
- FUCHSIA
- GOLD
- LAVENDER
- NAVY
- ROYAL
- SILVER



CD325

SIZE: 4 ~ 16

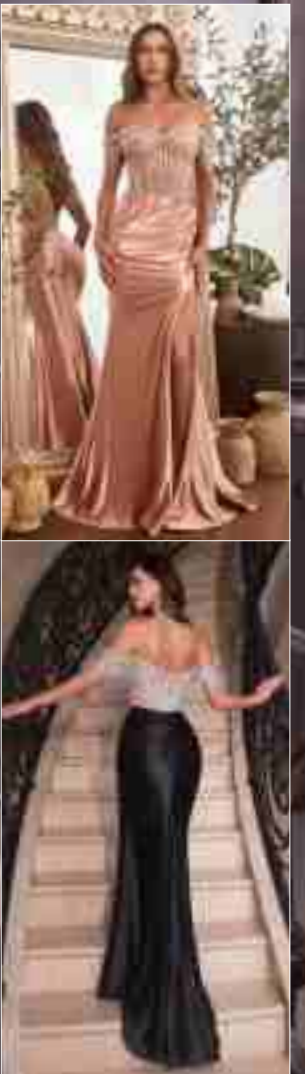
- BLACK
- BURGUNDY
- CHARTREUSE
- EMERALD
- PARIS BLUE



CD821

SIZE: 2 ~ 16

- BLACK
- ROSE GOLD



CD873

SIZE: 4 ~ 16

● BLACK



CB114

SIZE: 4 ~ 16

BLACK ○



CD885

SIZE: 4 ~ 16

● BLACK



CD288

SIZE: 2 ~ 14

○ BLACK

● RED



CH144

SIZE: XS ~ 4X

BLACK ○

EMERALD ●

LAPIS BLUE ●

PLATINUM ●

ROSE GOLD ●

WINE ●



CD294

SIZE: 2 ~ 14

○ BLACK

● RED





- BLACK
- OLIVE

SIZE: S ~ 4X

CH110



- OPAL BLUE

SIZE: 4 ~ 14

CD278



CD889

SIZE: 2 ~ 16

- BLACK
- FUCHSIA
- OCEAN BLUE
- RED
- ROYAL
- YELLOW



CD975

SIZE: 6 ~ 18

- BLACK
- BURGUNDY
- EMERALD
- MIDNIGHT GREY
- ROSEWOOD



CD980

SIZE: 4 ~ 18

- BLACK
- BURGUNDY
- EMERALD
- MIDNIGHT
- ROSEWOOD



CC2164

SIZE: 2 ~ 18

- BLACK-NUDE
- BURGUNDY
- EMERALD
- GOLD-MIST
- LAVENDER
- MAUVE
- PARIS BLUE
- RED
- ROYAL
- SAGE



CD988

SIZE: 2 ~ 16

- BLACK
- DUSTY BLUE
- EMERALD
- FUCHSIA
- LILAC
- RED
- ROYAL



CC1618

SIZE: 2 ~ 14

- AMETHYST
- BLACK-BLACK
- BLACK-SILVER
- BURGUNDY
- EMERALD
- MAGENTA
- NAVY
- POWDER BLUE
- RED
- ROYAL





J810

SIZE: 2 ~ 16

- BLACK ○
- BLACK-NUDE ○
- CHAMPAGNE ●
- DARK EMERALD ●
- DUSTY LAVENDER ○
- GOLD-MIST ●
- LAVENDER ○
- LT BLUE ●
- MAGENTA ●
- PARIS BLUE ●
- ROSE GOLD ●
- ROYAL ●
- SAGE ●
- SMOKY BLUE ○



LT. BLUE

LAVENDER

GOLD-MIST

DUSTY LAVENDER



The Starlet

RHINESTONE RADIANCE

CD866

SIZE: 2 ~ 18

● SILVER-NUDE



CD863

SIZE: 2 ~ 18

● ROSE CHAMPAGNE



CD992

SIZE: 2 ~ 16

- BLACK
- BLUE
- CHAMPAGNE
- LAVENDER
- ROSE GOLD
- SILVER



325



- ROSE GOLD
- SILVER

SIZE: 6 ~ 22

CD874



- BLUE
- PLATINUM

SIZE: 4 ~ 14

CD940

326

CD888

SIZE: 2 ~ 18

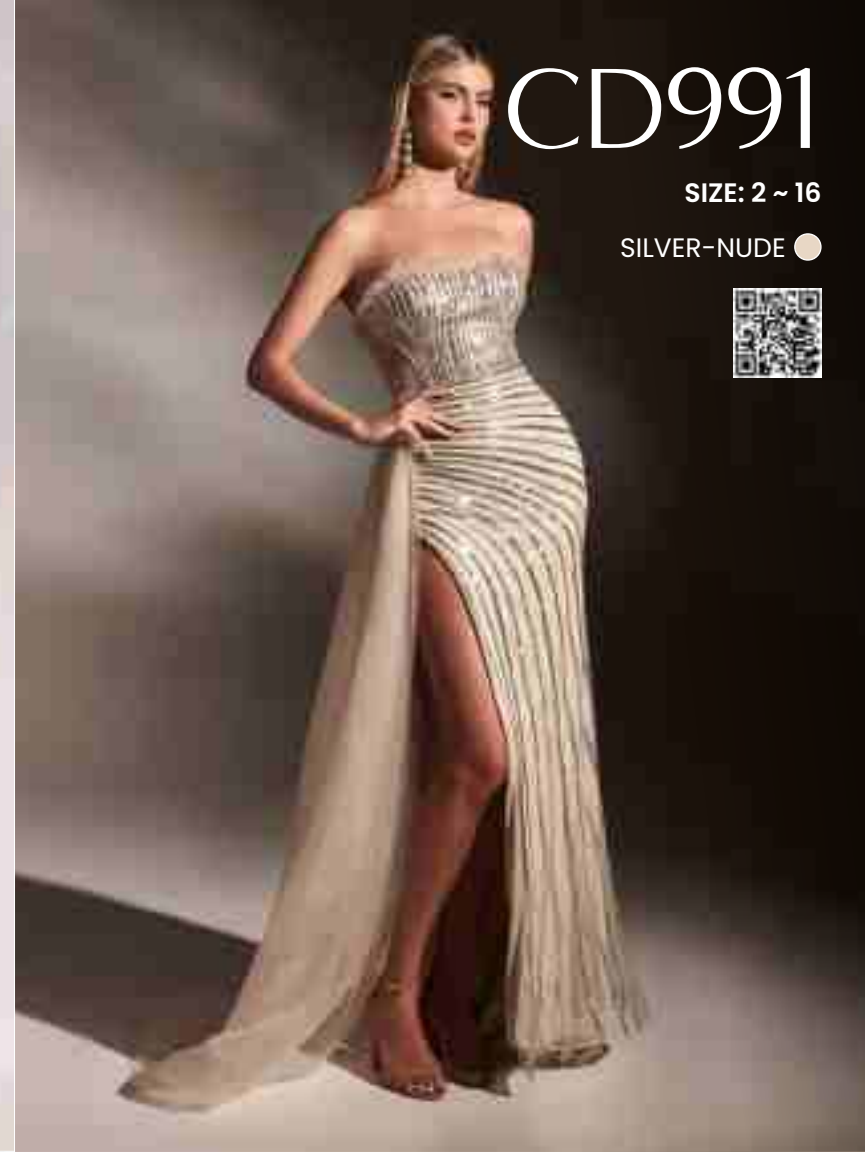
- BLACK
- DUSTY BLUE
- DUSTY ROSE
- LAVENDER
- RED
- ROYAL



CD991

SIZE: 2 ~ 16

SILVER-NUDE ●



CD993

SIZE: 6 ~ 18

PLATINUM ●

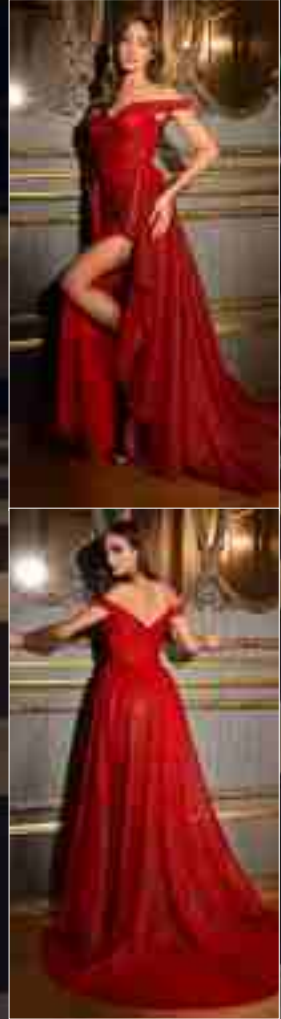


CD853

SIZE: 2 ~ 18

● RED

● SILVER-NUDE



J847

SIZE: 2 ~ 20

● DARK LAVENDER

● EMERALD

● GOLD-VIOLET

● LAPIS BLUE

● PARIS BLUE

● ROSE



CD864

SIZE: 6 ~ 24

- BLACK
- MAUVE
- SILVER



CDS438

SIZE: 6 ~ 20

- NAVY
- SMOKY BLUE



J836

SIZE: 6 ~ 20

- EMERALD
- SMOKY BLUE
- ROSE GOLD
- MAUVE
- ROYAL



333



334

J835

SIZE: 4 ~ 18

- EMERALD
- LAPIS BLUE
- MAUVE
- PLATINUM
- ROSE GOLD



335

J834

SIZE: 6 ~ 22

- DUSTY ROSE
- ENGLISH VIOLET
- GOLD
- NAVY



CD997

SIZE: 2 ~ 16

- BLUE
- CHAMPAGNE
- DUSTY ROSE
- LAVENDER



336

CH118

SIZE: XS ~ M

- BLACK
- METALLIC PINK
- SILVER



CD0198

SIZE: XS ~ 3X

- BLACK
- BURGUNDY
- CHAMPAGNE GOLD
- ENGLISH VIOLET
- MAUVE
- SMOKY BLUE



J832

SIZE: 4 ~ 16

- EMERALD
- MAUVE
- SMOKY BLUE



CM323

SIZE: 4 ~ 18

● NAVY-GOLD



CM327

SIZE: 10 ~ 22

● PEACOCK



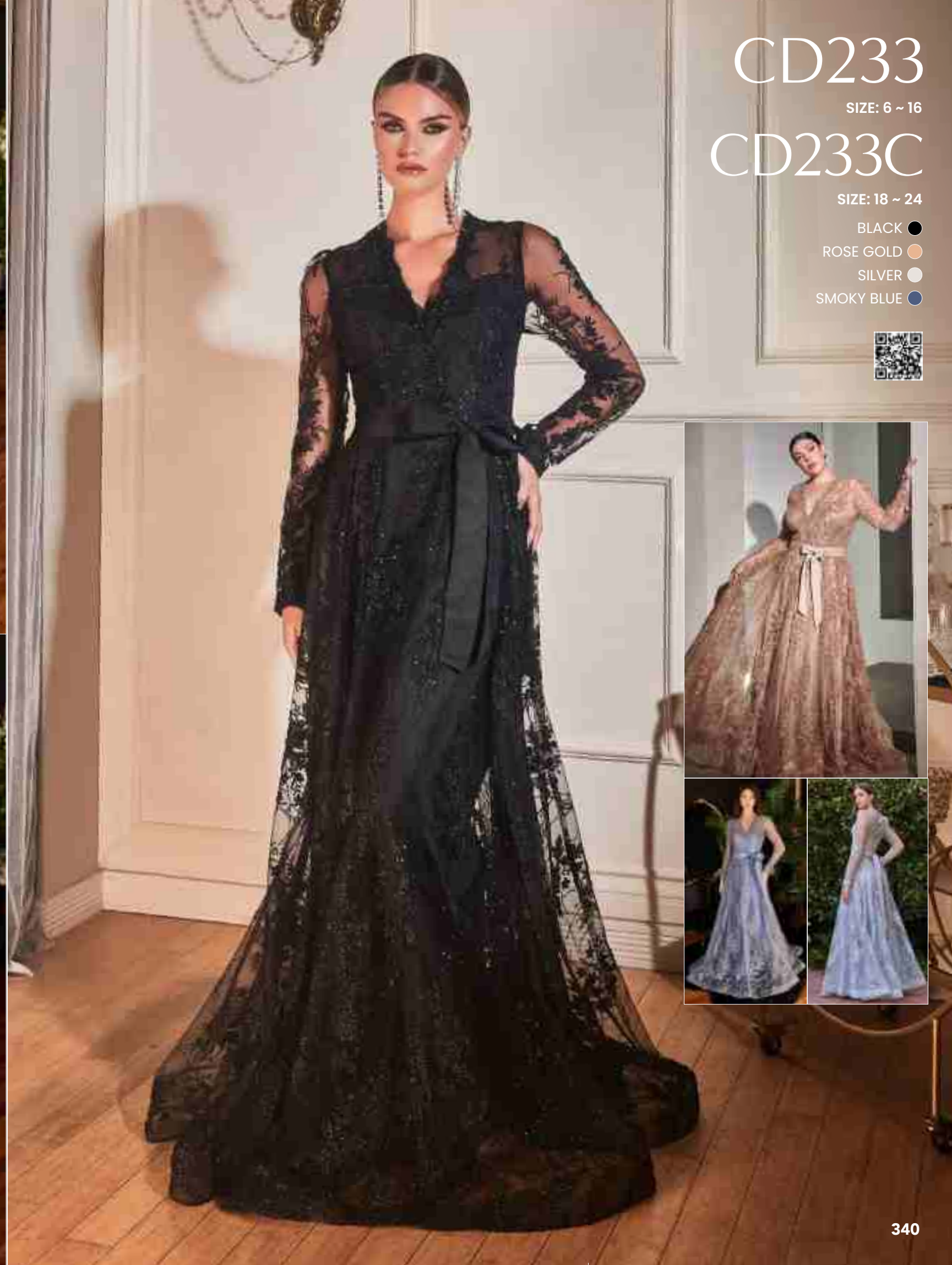
CD233

SIZE: 6 ~ 16

CD233C

SIZE: 18 ~ 24

- BLACK
- ROSE GOLD
- SILVER
- SMOKY BLUE



OC012

SIZE: 4 ~ 18

- BLACK
- ENGLISH VIOLET



CD961

SIZE: 4 ~ 20

- CHAMPAGNE
- EMERALD
- MAUVE
- PURPLE
- SKY BLUE



OC008

SIZE: 10 ~ 20

- DUSTY ROSE
- GREY PURPLE



J816

SIZE: 4 ~ 22

- GOLD-VIOLET
- LAPIS BLUE
- MAUVE
- NAVY
- ROSE GOLD
- SILVER-NUDE
- SMOKY BLUE



CD878

SIZE: 6 ~ 16

- BLACK
- CHAMPAGNE
- EMERALD
- PARIS BLUE
- ROSE



CH135

SIZE: S ~ 5X

- BLACK
- LAPIS BLUE
- PLATINUM
- ROSE GOLD
- WINE



CBO87

SIZE: 2 ~ 10

- ROSE GOLD
- SILVER



CB116

SIZE: 4 ~ 16

- DUSTY ROSE
- ROSE GOLD



CD0191

SIZE: XS ~ XL

- BLUSH
- CHAMPAGNE
- SMOKY BLUE



J852

SIZE: 2 ~ 16

- BLUSH
- DUSTY ROSE
- GOLD-VIOLET
- LAPIS BLUE
- SAGE
- SMOKY BLUE



OC007

SIZE: 4 ~ 14

- DUSTY BLUE
- VIOLET



CD0177

SIZE: XS ~ 3X

- BURGUNDY
- CHAMPAGNE
- MAUVE
- NAVY



CD243

SIZE: 6 ~ 16

- BLACK
- BURGUNDY
- CHAMPAGNE
- PETAL BLUSH
- ROUGE
- SAGE
- SIENNA
- SMOKY BLUE



9174

SIZE: S ~ 2X

- MAUVE
- NAVY



CD0172

SIZE: S ~ 4X

- ENGLISH VIOLET
- ROSE GOLD
- SAGE
- SMOKY BLUE



351



- ROBIN BLUE
 - VIOLET
- SIZE: 4 ~ 12

OC014



CD0171

SIZE: S ~ 4X

- DUSTY ROSE
- SMOKY BLUE



352

J838

SIZE: 4 ~ 18

- BLUSH
- BURGUNDY
- MAUVE
- NAVY
- SMOKY BLUE



353



- DARK MAUVE
- EMERALD
- PARIS BLUE

SIZE: 6 ~ 22

CD989



- BLACK
- CHAMPAGNE
- DUSTY ROSE
- SILVER

SIZE: 2 ~ 20

CD948

354

C153

SIZE: 2 ~ 16

- BLUE
- EMERALD
- GOLD
- ROSE GOLD



C156

SIZE: 2 ~ 14

- FUCHSIA



CC4007

SIZE: 6 - 18

● BLACK



CD0233

SIZE: 2 - 16

EMERALD ●



CD347

SIZE: 4~ 18

- BLACK
- SANGRIA



BD105

SIZE: XS ~ 2X

- BURGUNDY
- DESERT ROSE
- DUSTY BLUE
- EMERALD
- FRENCH NAVY
- MAHOGANY
- MAUVE
- SAGE
- SAND
- SIENNA



KV1057

SIZE: 4 ~ 16

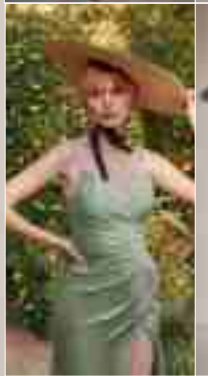
- BLACK
- BURGUNDY
- DUSTY ROSE
- EMERALD
- LT BLUE
- RED
- ROYAL



7494

SIZE: 4 ~ 16

- BLACK
- BURGUNDY
- EMERALD
- LAVENDER
- MAUVE
- MAUVE ROSE
- PARIS BLUE
- SAGE
- SMOKY BLUE



- BLACK
- EMERALD
- LAVENDER
- RED
- SIENNA

SIZE: XS ~ XL

CH112

361



362

7479

SIZE: 4 ~ 16

- BLACK
- BURGUNDY
- EMERALD
- MAUVE
- NUDE
- ROBIN BLUE
- ROSE GOLD
- SIENNA



7475

SIZE: 6 ~ 16

7475C

SIZE: 18 ~ 24

- BURGUNDY
- EMERALD
- MAUVE
- NAVY
- NUDE
- ROSE GOLD
- SAGE
- SIENNA
- SMOKY BLUE



7485

SIZE: 4 ~ 16

- BLACK
- BURGUNDY
- EMERALD
- MAUVE
- MAUVE ROSE
- NUDE
- PARIS BLUE
- SAGE
- SIENNA
- SMOKY BLUE



7482

SIZE: 6 ~ 16

- CHAMPAGNE
- EMERALD
- MAUVE
- ROSE GOLD
- SIENNA
- SUNSET RUST



BD4002

SIZE: XS ~ L

- BLACK
- DEEP RED
- ROYAL



BD4001

SIZE: XS ~ L

- BARBIE PINK
- BLACK
- EMERALD
- LAVENDER
- RED
- ROYAL



- BLACK
- OCEAN BLUE

SIZE: XS ~ M

BD7012



BD7026

SIZE: XS ~ L

- BLACK
- DEEP MAUVE
- DEEP RED
- OLIVE
- PURPLE



BD7042

SIZE: XS ~ M

- BARBIE PINK
- BLACK-NUDE
- LAVENDER
- LT BLUE
- OCEAN BLUE



BD111

SIZE: XS ~ 2X

- BLACK
- BURGUNDY
- DUSTY ROSE
- EMERALD
- ROBIN BLUE
- ROYAL
- YELLOW



BD103

SIZE: XS ~ 2X

- BLACK
- BURGUNDY
- CHAMPAGNE GOLD
- DESERT ROSE
- DUSTY BLUE
- DUSTY ROSE
- EMERALD
- FRENCH NAVY
- LIPSTICK
- MAUVE
- SAGE
- SAND
- SIENNA
- YELLOW



BD7044

SIZE: XS ~ L

- BLACK
- EMERALD
- FUCHSIA
- OFF WHITE
- PARIS BLUE
- RED
- ROSE GOLD
- ROSEWOOD





7469

SIZE: 2 ~ 24

- BLACK ●
- BLUSH ●
- BURGUNDY ●
- DARK MAUVE ●
- EGGPLANT ●
- EMERALD ●
- FRENCH NAVY ●
- LAVENDER ●
- MAUVE ●
- NAVY ●
- NUDE ●
- PARIS BLUE ●
- RED ●
- ROSE GOLD ●
- ROYAL ●
- SAGE ●
- SIENNA ●
- SMOKY BLUE ●



SHORT

PARTY DRESSES FROM
TEA LENGTH TO MINI

CD871

SIZE: 4 ~ 16

SILVER ●



CD0224

SIZE: 2 ~ 14

● BLACK



CC2261

SIZE: 2 ~ 14

BLACK ●

GOLD-MIST ●



CD0226

SIZE: 2 ~ 18

- BURGUNDY
- CHAMPAGNE
- NAVY
- SMOKY BLUE



CD0225

SIZE: 2 ~ 18

- BURGUNDY
- CHAMPAGNE
- NAVY
- SMOKY BLUE



CH190

SIZE: XS ~ XL

- BLACK
- EMERALD
- FUCHSIA
- LAPIS BLUE
- PLATINUM
- ROSE GOLD



BD7027

SIZE: XS ~ M

- BLACK
- BLACK-GLITTER
- BORDEAUX
- HOT PINK
- LAVENDER
- NUDE



- BLACK
- EMERALD
- LAPIS BLUE
- PLATINUM
- ROSE GOLD

SIZE: 2X ~ 5X

CH190C

CD0140

SIZE: XS ~ 2X

- BLUE
- BLUSH
- BURGUNDY
- CHAMPAGNE
- FRENCH LILAC
- OFF WHITE
- RED
- ROYAL



CD870

SIZE: 4 ~ 14

- EMERALD
- GOLD
- RED
- TURQ



9310

SIZE: XXS ~ 2X

- BLACK
- BLUE
- BLUSH
- CHAMPAGNE GOLD
- LAVENDER
- SAGE



385



CD0187

SIZE: XS ~ 3X

- BLACK
- BLUSH
- CHAMPAGNE
- SMOKY BLUE



386

CD0132

SIZE: XS ~ 3X

- BLUSH
- CHAMPAGNE
- LAVENDER
- MAUVE
- OFF WHITE
- SAGE
- SILVER



KV1089

SIZE: 4 ~ 14

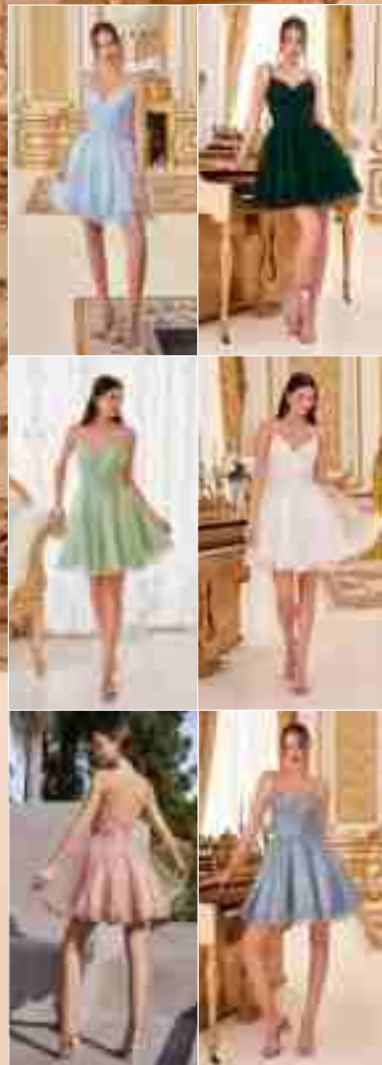
- BLACK
- BLUSH
- CHAMPAGNE
- EMERALD
- LAVENDER
- PARIS BLUE
- SAGE



CD0213

SIZE: XS ~ 3X

- BLUSH
- CHAMPAGNE
- EMERALD
- LT BLUE
- OFF WHITE
- SAGE
- SILVER
- SMOKY BLUE



389



UJ0119

SIZE: XXS ~ 3X

- BLUSH
- BURGUNDY-GOLD
- CHAMPAGNE
- ICE BLUE
- LAVENDER
- MAUVE
- OFF WHITE
- ROSE
- SAGE
- SILVER



390



9245

SIZE: XS ~ 3X

- BLUSH
- CHAMPAGNE
- EMERALD
- LAVENDER
- SAGE
- SMOKY BLUE



CD0194

SIZE: XS ~ 3X

- BLUSH
- BURGUNDY-GOLD
- CHAMPAGNE
- LILAC
- SMOKY BLUE



CD0212

SIZE: XS ~ 2X

- BLUSH
- CHAMPAGNE
- ENGLISH VIOLET
- LAVENDER
- OFF WHITE
- SILVER
- SMOKY BLUE



CD0190

SIZE: XS ~ 3X

- BLUSH
- BURGUNDY-GOLD
- CHAMPAGNE
- LILAC
- SMOKY BLUE



CD0211

SIZE: XS ~ 2X

- BLUSH
- CHAMPAGNE
- EMERALD
- LAVENDER
- OFF WHITE
- SMOKY BLUE



CD0174

SIZE: XS ~ 3X

- BLACK
- CHAMPAGNE
- EMERALD
- LAVENDER
- OFF WHITE
- ROSE GOLD
- SILVER
- SMOKY BLUE



9243

SIZE: XS ~ 3X

- CHAMPAGNE
- ROSE GOLD
- ROYAL
- SMOKY BLUE



9239

SIZE: XXS ~ 2X

- CHAMPAGNE-GOLD
- MAUVE
- OFF WHITE-GOLD
- ROSE GOLD
- SMOKY BLUE



CD0188

SIZE: XS ~ 3X

- BLUSH
- BURGUNDY-GOLD
- CHAMPAGNE
- LAVENDER



CD0189

SIZE: XS ~ 3X

- BLUSH
- CHAMPAGNE
- SMOKY BLUE



CURVE

STUNNING SILHOUETTES
DESIGNED FOR **PLUS SIZE**



CC2349C

SIZE: 18 ~ 24

- BLACK
- EMERALD
- RED
- ROYAL



403



CD838C

SIZE: 16 ~ 24

- BLACK
- DUSTY BLUE
- EMERALD



404

CDS495C

SIZE: 16 ~ 24

● BLACK



CM334C

SIZE: 18 ~ 24

BLACK ○

EMERALD ●

MAGENTA ●

RED ●



CDS440C

SIZE: 18 ~ 24

- BLACK
- DUSTY BLUE
- EMERALD
- MIDNIGHT
- ROYAL
- SAND



CD0219C

SIZE: 18 ~ 24

- BLACK
- EMERALD
- SMOKY BLUE



CD349C

SIZE: 16 ~ 24

- BLACK
- BLUE
- EGGPLANT
- HOT PINK



CH079C

SIZE: 2X ~ 5X

- BLACK
- BURGUNDY
- DUSTY BLUE
- EMERALD
- GOLD
- NAVY



CD0214C

SIZE: 18 ~ 24

- BLACK
- EMERALD
- GOLD
- LAPIS BLUE
- RED
- SMOKY BLUE



CD0217C

SIZE: 18 ~ 24

- AMETHYST
- BLACK
- DEEP BLUE
- DUSTY LAVENDER
- MOCHA GOLD
- SIENNA
- SMOKY BLUE



CD307C

SIZE: 18 ~ 24

- BLACK
- EMERALD
- LILAC
- ROYAL



CD840C

SIZE: 16 ~ 24

- AZALEA PINK
- AZURE
- BLACK
- DUSTY VIOLET
- EMERALD



CDS482C

SIZE: 18 ~ 24

- BLACK
- EMERALD



CH077C

SIZE: 2X ~ 4X

- BLACK
- EMERALD
- LAPIS BLUE
- PLATINUM
- RED
- WINE



PT004C

SIZE: 18 ~ 24

- BLACK
- BURGUNDY
- DUSTY ROSE
- EMERALD
- GOLD
- MAGENTA
- NAVY
- SIENNA ROSE
- SMOKY BLUE



CDS423C

SIZE: 16 ~ 22

- BLACK
- DEEP EMERALD
- ROYAL



CDS496C

SIZE: 18 ~ 24

- BLACK
- BURGUNDY
- DUSTY BLUE
- EMERALD
- NAVY
- RED



CD327C

SIZE: 18 ~ 24

- BLACK
- BURGUNDY
- EMERALD
- FRENCH NAVY
- NOVA PURPLE
- SMOKY BLUE



CD943C

SIZE: 18 ~ 24

- BLACK
- BURGUNDY
- DESERT ROSE
- DUSTY BLUE
- EMERALD
- LILAC
- MAUVE
- RED
- ROYAL



CD210C

SIZE: 16 ~ 26

- METALLIC BLUE
- METALLIC ROSE



7485C

SIZE: 18 ~ 24

- BLACK
- BURGUNDY
- EMERALD
- MAUVE
- MAUVE ROSE
- NUDE
- PARIS BLUE
- SAGE
- SIENNA
- SMOKY BLUE



DRESS FEATURED
C154C IN NAVY



Rise in the CURVE market

IN 2023, THE PLUS-SIZE CLOTHING MARKET IN THE UNITED STATES IS EXPERIENCING SIGNIFICANT GROWTH. THE MARKET VALUE IS ESTIMATED AT US\$ 288 BILLION IN 2023, AND IT'S EXPECTED TO EXPAND AT A COMPOUND ANNUAL GROWTH RATE (CAGR) OF 5.7%, POTENTIALLY REACHING OVER US\$ 501.35 BILLION BY 2033. A MAJOR CONTRIBUTING FACTOR TO THIS GROWTH IS THE INCREASING DEMAND FOR PLUS-SIZE APPAREL, DRIVEN BY A PLUS SIZE POPULATION SEEKING COMFORTABLE AND FASHIONABLE CLOTHING OPTIONS. **THE BODY POSITIVITY MOVEMENT** HAS BEEN A MAJOR DRIVER OF THE DEMAND FOR PLUS SIZE CLOTHING. IT ENCOURAGES INCLUSION AND CELEBRATES ALL BODY SHAPES, EMPOWERING PEOPLE TO LOVE THEIR BODIES AND DEMAND ATTRACTIVE CLOTHING ALTERNATIVES.

7496C

SIZE: 18 ~ 24

- BLACK
- BURGUNDY
- HUNTER GREEN
- MAUVE
- MAUVE ROSE
- NAVY
- ROSE GOLD
- SAGE
- SIENNA



C148C

SIZE: 18 ~ 24

- BLUE
- DUSTY MAUVE
- DUSTY TEAL



C154C

SIZE: 18 ~ 24

- BLUE
- DUSTY MAUVE
- EMERALD
- LAVENDER
- NAVY



CD845C

SIZE: 18 ~ 24

- BLUE
- ROSE GOLD



C150C

SIZE: 18 ~ 24

- BLUE
- DUSTY TEAL
- EMERALD
- MAUVE
- RED



CD325C

SIZE: 18 ~ 24

- BLACK
- BURGUNDY
- CHARTREUSE
- EMERALD
- PARIS BLUE



CD326C

SIZE: 18 ~ 24

- BLACK
- LIPS
- RED
- SAGE
- SOFT NAVY



7497C

SIZE: 18 ~ 24

- BLACK
- BURGUNDY
- HUNTER GREEN
- MAUVE ROSE
- MAUVE
- NAVY
- SAGE
- SIENNA





- BLUSH
- BURGUNDY
- CHAMPAGNE
- SMOKY BLUE

SIZE: 2X ~ 5X

CD0191C



- MAUVE
- NAVY

SIZE: 3X ~ 7X

9174C

433



CD252C

SIZE: 18 ~ 24

- BLACK
- CHAMPAGNE GOLD
- EMERALD
- LAVENDER
- RED
- ROYAL
- SMOKY BLUE



434

CD254C

SIZE: 18 ~ 24

- BLACK
- CHAMPAGNE GOLD
- EMERALD
- LAVENDER
- NAVY
- RED
- ROYAL
- SILVER
- SMOKY BLUE



7493C

SIZE: 18 ~ 24

- BLACK
- BURGUNDY
- EMERALD
- FRENCH NAVY
- LAVENDER
- MAUVE ROSE
- SAGE



7484C

SIZE: 18 ~ 24

- BLACK
- BLUE
- DUSTY ROSE
- EMERALD
- LILAC
- LIPS
- OLIVE
- RED
- ROSEWOOD
- SAGE
- SOFT NAVY



7492C

SIZE: 18 ~ 24

- BLACK
- BURGUNDY
- EMERALD
- FRENCH NAVY
- LAVENDER
- MAUVE ROSE
- MAUVE
- OLIVE
- SAGE
- SIENNA
- SMOKY BLUE



7494C

SIZE: 18 ~ 24

- BLACK
- BURGUNDY
- MAUVE ROSE
- LAVENDER
- SMOKY BLUE
- EMERALD
- PARIS BLUE
- MAUVE
- SAGE



CD975C

SIZE: 18 ~ 24

- BLACK
- BURGUNDY
- EMERALD
- MIDNIGHT GREY
- ROSEWOOD



KV1057C

SIZE: 18 ~ 24

- BLACK
- BURGUNDY
- DUSTY ROSE
- EMERALD
- LT BLUE
- RED
- ROYAL



7488C

SIZE: 18 ~ 24

- BLACK
- BURGUNDY
- EMERALD
- FRENCH NAVY
- MAHOGANY
- MAUVE ROSE
- SAGE
- SIENNA
- SMOKY BLUE

DRESS FEATURED
CC2253 IN EMERALD, J869 IN EMERALD





WEBSITE RETAILER LOGIN

Register online to see new arrivals, current inventory, and updated prices.

ORDER.LADIVINE.COM



FOLLOW US ON INSTAGRAM

@LADIVINE_BYCD

SIGN UP for TEXT NOTIFICATION

INSTRUCTION:

1. Text "join" to **+1-833-705-2406**
2. Text "yes" to confirm signing up for phone notifications

inquire via WHATSAPP

questions regarding styles & inventory

+1-213-748-5678

questions regarding shipping/order status

+1-213-748-7799

ORDERING & SHIPPING POLICIES

1. All sales are final. No refund nor exchange are permitted.
2. Credit card & wire are acceptable payment methods.
3. The company has the right to refuse service, order or retailer membership.
4. Some items may not look exactly as they appear in the catalog, and there may be a slight color difference per production lot.
5. The default shipping method is UPS Ground unless otherwise requested.
6. All orders are checked twice by the personnel to ensure correct shipment as ordered. When you receive your shipment, open the package and inspect carefully. Any discrepancies should be reported within 5 days of receiving the shipment to return@ladivine.com
7. Customer agrees to pay for the freight fee and customs duty.
8. In case of refused shipment, the customer will be charged the double freight fees of the respective packages, the handling fee of \$45 per package without exception. If the customer does not pay the above mentioned fees of refused package(s), the account of the customer will be made inactive.
9. Retailer membership requires a minimum of \$1000 per year to be renewed.

CONTACT US ON E-MAIL

Showroom/Sales Department:
SALES@LADIVINE.COM

Web Department:
WEB@LADIVINE.COM

Shipping / Customer Support:
SUPPORT@LADIVINE.COM



Ladivine

BY CINDERELLA DIVINE

1433 Griffith Ave
Los Angeles, CA 90021

- **Web:** order.ladivine.com
- **E-mail:** sales@ladivine.com
- **Tel.** 213-748-5678